
opexservice.net

Created by Lindsey Avery

Table of Contents:

(NOTE: Items with * have not been completed so may not be included in pdfs yet.)**

- A. Intro/Description of Designed Website
- B. ***Target Audience
- C. ***Target Platforms
- D. Website Objectives
 - I. Security Features
 - II. Web Conferencing
 - III. Adobe Captivate
 - IV. Training Dashboard
- E. ***Stakeholders and Their Needs
- F. ***Usability Objectives
- G. Functional Specifications:
 - I. All Users
 - II. Guests
 - III. Technicians: User and Group Permissions
 - IV. Support Engineering: User and Group Permissions
 - V. Managers (Regional Managers): User and Group Permissions
 - VI. Admin: User and Group Permissions
- H. Site Diagram and Notes
- I. Task Analysis List
- J. Taskflow Diagrams:
 - I. Site Login
 - II. View/Edit Profile
 - III. Help
 - IV. Inventory
 - V. Service Bulletins and Service Manuals
 - VI. Grades (All)
 - VII. Training Dashboard (Create/Edit Lesson)
 - VIII. Take Lesson (Includes Quiz/Exam)
- K. Page/View Wireframes:
 - I. Main Nav
 - II. User Nav
 - III. ***Page Nav
 - IV. /Default.asp
 - V. Profile
 - VI. Profile - Edit
 - VII. Help
 - VIII. Inventory
 - IX. Service Bulletins and Service Manuals
 - X. ***FSR Viewer
 - XI. Grades
 - XII. About Lessons
 - XIII. Training Dashboard (Create/Edit Lessons)
 - XIV. /SelectLesson02.asp
 - XV. Take Lesson
- L. Color Palettes:
 - I. Blue
 - II. Green
 - III. Red
 - IV. Gold
- M. ***Color Schemes:
- N. ***Textures and Icons:
 - I. Texture - Metal with Dark Grid (Background)
 - II. Texture - Smooth Metal (Background)
 - III. ***Icons - Main Nav
 - IV. ***Icons - User Nav
 - V. ***Icons - Page Nav
 - VI. ***Icons - Training Dashboard
- O. ***Page/View Design Mockups:
- P. ***Prototype/Testing Site Information
- Q. ***Testing Results and Changes

Intro / Description of Designed Website

Currently, and in future, the opexservice.net site is a training site for specific Opex employees, as well as a source of documents needed by those employees when on the job. Training consists of various lessons about several types of machines produced by Opex including: extractors, sorters, scanners, and material handlers. The lessons are, for the most part, currently swf files - in future this will extend to include video lessons and web conferencing.

Target Audience

The target audience for opexservice.net is specific Opex employees, which largely consists of: Technicians, Regional Managers, Communications, and Support Engineering users.

Technicians (i.e. Field Service Technicians):

Technicians respond to customer demand calls as well as perform preventative maintenance on-site on the contracted equipment, additionally they also manage machine-part inventory.

Regional Managers:

(TBD - Bob, please let me know the general job description for this.)

Support Engineering:

(TBD - Bob, please let me know the general job description for this.)

Communications:

(TBD - Bob, please let me know the general job description for this.)

Target Platforms

Desktop Operating Systems:

Opexservice.net will be supported by all major operating systems including:

Apple: OSX 10.10 Yosemite

Windows: 7, 8

Desktop Browsers:

Opexservice.net will be supported by all major desktop browsers including:

Chrome: 42

Firefox: 38

Internet Explorer: 11

Safari (Mac): 8

Desktop Visual Configuration:

(TBD during build.)

Desktop Plugins:

(TBD during build.)

Desktop Internet Connection Speed:

Internet connection speed will be a broadband connection (256 kbps and higher).

Website Objectives:

The main objective of opexservice.net, currently and in future, is to serve as a training website for specific Opex employees. Currently, the site provides training via asynchronous methods consisting of lessons and quizzes, or exams, that have been created locally using Adobe Flash and/or HTML/ASP. On the new site, both asynchronous and synchronous (i.e. "live") training methods will be used including: Flash and HTML/ASP-based lessons, as well as web conferencing, and recorded web conferencing sessions.

"Asynchronous" is defined in the Merriam-Webster Dictionary as: *"of, used in, or being digital communication (as between computers) in which there is no timing requirement for transmission...not synchronous"* and "synchronous" is defined as: *"of, used in, or being digital communication (as between computers) in which a common timing signal is established that dictates when individual bits can be transmitted and which allows for very high rates of data transfer... happening, existing, or arising at precisely the same time"*.

The existing lessons will continue to be offered as well as new lessons created using Flash, HTML/ASP, and web conferencing sessions including recordings of those sessions, however the "live" sessions will be offered only in the chosen web conferencing program/service as required by all service providers.

Security:

Various security features will be continued from the existing opexservice.net site, and additional measures may be added as the site is built.

Security Features:

- ◇ Watermarks displaying user's name
- ◇ Validation codes are required as a secondary login feature
- ◇ Validation codes are emailed after user name and password are successfully submitted
- ◇ Validation codes are only sent to @opex.com domain email addresses
- ◇ Site will time out after a specific time period and requires a new log in and validation code
- ◇ New validation code is required if the browser is closed
- ◇ Users cannot bookmark or link to pages within the site

Web Conferencing:

At this time, the web conferencing element of training is in its infancy, however a required set of typical capabilities, etc., necessary for Opex's training needs, has been defined.

Required Capabilities:

- ◇ Mature service that has had several successful versions
- ◇ Good reputation for their eLearning/training capabilities
- ◇ Easy setup/install
- ◇ Ability to record sessions and upload recordings to opexservice.net site
- ◇ Audio & video (including call-in) capabilities
- ◇ IM/chat window
- ◇ Desktop and app sharing
- ◇ Form of secure login
- ◇ Ability to set up session / upload files before session starts
- ◇ Ability to take attendance / document participant list
- ◇ Quiz creation in-program or ability to upload quiz that participants can complete in-session
- ◇ Ability to automatically or manually grade quizzes in-session
- ◇ Ability to show quiz grades privately to participants
- ◇ Ability to send grades to participants for documentation
- ◇ Available for both web and mobile users
- ◇ Accessible from employees' locations (including internationally)
- ◇ Reliable tech support available during training hours

Five services are being reviewed, including:

- ◇ Adobe Connect
- ◇ Cisco WebEx
- ◇ Microsoft Skype For Business
- ◇ AT&T
- ◇ Blackboard Collaborate (i.e. Elluminate Live! or ClassLive Pro)

Training Dashboard:

The Training Dashboard may be used by those within the Support Engineering user group to create and/or edit lessons including uploading content that has been created locally to be used for lessons, quizzes/exams, and grade views.

File Formats That May Be Uploaded and Used for Content:

- ◇ SWF
- ◇ HTML/ASP

Adobe Captivate:

In addition, Adobe Captivate may be used locally to create: lessons, quizzes/exams, as well as grade/score views in various formats. These files may be uploaded via the Training Dashboard or uploaded via ftp.

Adobe Captivate Lesson Formats:

- ◇ Interactive
- ◇ Recorded
- ◇ Video-based
- ◇ Widgets
- ◇ Flash-based
- ◇ HTML-based
- ◇ A combination of these

These lessons may be published to the opexservice.net site, but it is worth mentioning that they may also be published to Adobe Connect (one of the web conferencing services being reviewed) and viewed in-session.

Functional Specifications and Permissions:

The audience for opexservice.net largely consists of: Technicians, Support Engineering, and Regional Managers.

Permissions:

All Users and Groups:

- ◇ Access to landing pages, log in areas, and all public areas of the site.
- ◇ Access to profile with editing capabilities.
- ◇ Access to "Help".

Technicians:

Group Permissions:

- ◇ Access to "Lessons", related quizzes and exams.
- ◇ Access to Inventory.
- ◇ Access to "Service Bulletins" and "Service Manuals".

User Permissions:

- ◇ Includes: "All Users" permissions.
- ◇ Access to Retests only if the exams were completed in-house.
- ◇ Restricted access to "FSR Viewer".

Support Engineering:

Group Permissions:

- ◇ Access to "Lessons", related quizzes and exams.
- ◇ Access to "Service Bulletins" and "Service Manuals".
- ◇ Access to "/SelectLesson02.asp" editing capabilities for announcements, lesson updates, and lesson list.
- ◇ Access to "Training Dashboard".

User Permissions:

- ◇ Access to "FSR Viewer".

Managers (i.e. Regional Managers):

Group Permissions:

- ◇ Access to "Grades".
- ◇ Access to "Lessons", related quizzes and exams.
- ◇ Access to assign a pre-employment test to an outside user and review the results.
- ◇ Access to "Inventory".
- ◇ Access to capability to assign techs to warehouses for inventory and cycle counts.
- ◇ Access to "Service Bulletins" and "Service Manuals".

User Permissions:

- ◇ Includes: "Technician" Group and User permissions.
- ◇ Access to "FSR Viewer".

Communications:

Group Permissions:

- ◇ Access to "Service Bulletins" and "Service Manuals".

User Permissions:

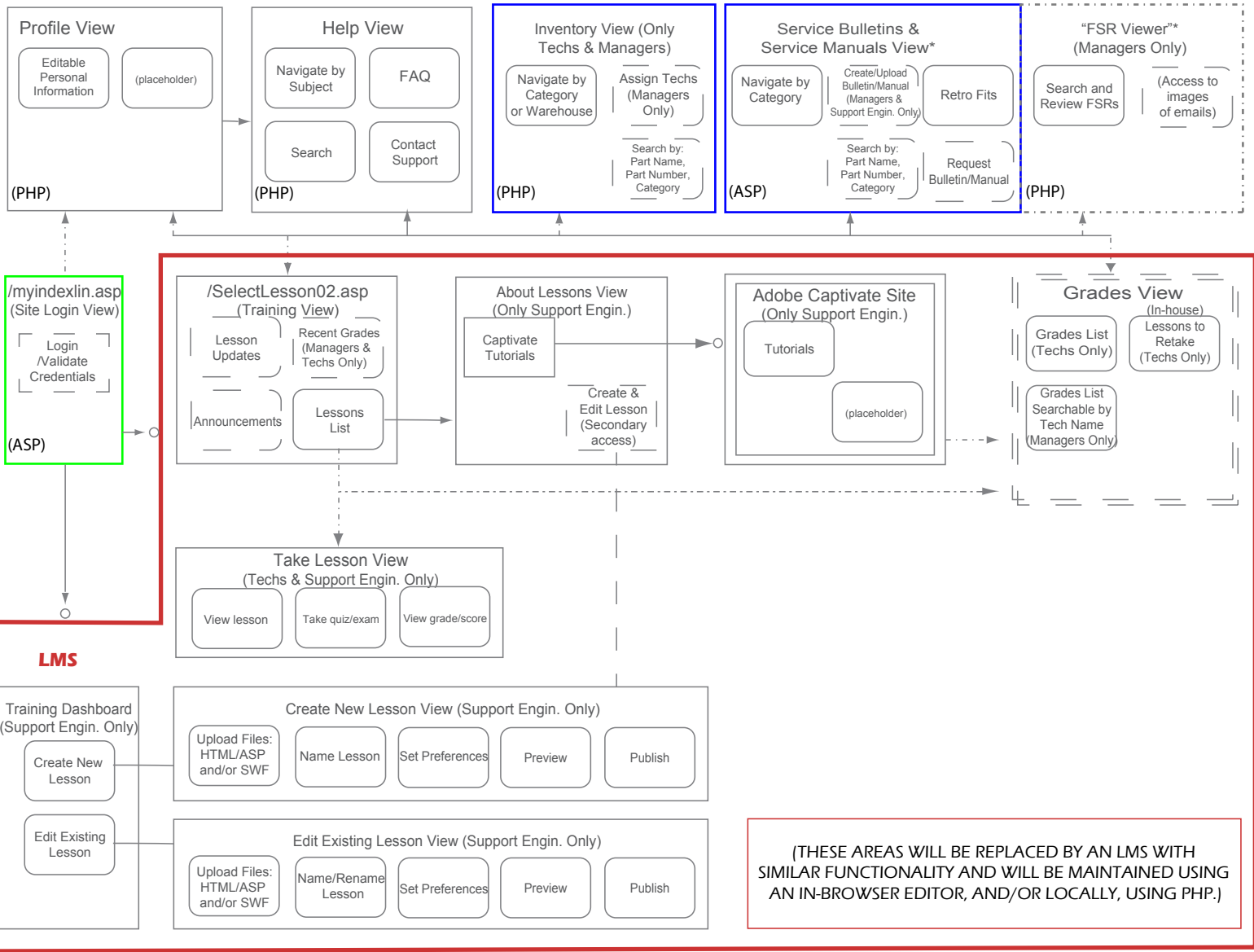
- ◇ None.

Administrators:

Group Permissions:

- ◇ Includes: "Technician", "Support Engineering", "Communications", and "Managers" Group and User permissions.

opexservice.net Website Diagram v.11



(THESE AREAS WILL BE REPLACED BY AN LMS WITH SIMILAR FUNCTIONALITY AND WILL BE MAINTAINED USING AN IN-BROWSER EDITOR, AND/OR LOCALLY, USING PHP.)

| Links | Pages and Single Views | Content Within and Multiple Views | Status |
|---------|------------------------|-----------------------------------|--|
| → ○ | Static View | Content Within a View | Coding Completed |
| → | Dynamic View | Multiple Views | Created/Maintained in LMS |
| — | DB Involvement | | Coding-In-Progress (Wireframe and/or Mockup Completed) |
| - - - - | | | Functionality Changed During Build and Needs Updating Here |
| ┌ | | | |
| └ | | | |

opexservice.net Site Diagram Notes

Comments: As of this version, several items have been “moved” to the LMS and the site diagram reflects this. A “Status” color chart has been added and all items reflect their current status (as of this site diagram version). Changes will continue to be made as the site is built and will eventually result in a final version of this site diagram near completion of the site build.

The development webpage addresses/file names were used when available, and will be changed to their production addresses prior to going live (ex. /myindexlin.asp).

Placeholders were used in areas where additional planning/research is required, but additional features are expected (ex. “FSR Viewer” - Tom Goraj’s project).

“/myindexlin.asp (i.e. Site Login View)”:

This is the future **landing/login page** for the opexservice.net site. Currently a similar login is in use, including: validation, and validation expired pages (both completed), as well as validation code sent to email, however this may change in favor of SSL 128 or similar security features.

“Profile”:

This is the future **user profile page**; it will contain dynamic personal information that may be updated by the user. This page may be accessed using the main nav.

“Help”:

This is the future **help area**, which may be accessed from all areas of the site using the main nav (except for areas in the LMS). **Capabilities will include: “Navigate by Subject”, “FAQ”, “Search” capability, and “Contact Support”**. Changes may be made once the LMS is chosen.

“Inventory”:

This represents the future **inventory area** (which is only visible to Techs and Managers); included **capabilities for both Techs and Managers: “Navigate by Category or Warehouse”, and “Search by: Part Name, Part Number, Category”**.

Capabilities for Managers only:

“Assign Techs” which is the **capability to assign techs to specific warehouses for inventory and cycle counts**. Additional capabilities may be added.

“Service Bulletins & Manuals”:

Note: Initial taskflow Diagram has been created displaying these possible capabilities but wireframe has not been created. Development and design are being completed by Eric Nagy. This represents the **future area(s) for viewing/maintaining Service Bulletins and Service Manuals**. As with the current site, Techs, Managers, and Support Engineering users will have access to this area(s), however what is visible will depend upon permissions/privileges.

Possible capabilities may include: “Navigate by Category”, “Search by: Part Name, Part Number, Category”, “Request Bulletin/Manual”, and “Retro Fits”. The “Navigate by Category”, and “Search by: Part Name, Part Number, Category”. **Capabilities may mirror those in the “Inventory” area** of the new site.

opexservice.net Site Diagram Notes (Continued) p.2

“Request Bulletin/Manual” capability may be similar to the current capability to **request Service Manual pdfs specific to individual users** and containing specific information, but in future the capability to create such pdfs may be more automated.

“Retro Fits” capability is a current and future capability which involves **showing what machines require a retro fit**, which machines are complete, and which machines are delinquent.

“FSR Viewer” (*See Tom Goraj*):

This is a placeholder for a separate utility maintained by Tom Goraj for the Managers (i.e. Regional Service Managers (RSMs)). The **“FSR Viewer” allows technicians and regional service managers to search and view Field Service Reports completed by technicians and e-mailed to customers.** This is replacing another process that involves individual downloads of large amounts of data to the users (RSMs) local computer. Look into moving to a web based solution for easier maintenance and access of the data.

Capabilities included: “Search and Review FSRs” and “Access to Images of Emails”. Database connectivity has been marked in site diagram (dotted lines mark areas of database involvement). More research is needed and detail will be added.

Areas Moved to LMS:

“/SelectLesson02.asp (i.e. Training View)”:

This is the current and future **lesson selection page** (though page address may be changed); it will contain dynamic: announcements, lesson updates (i.e. lesson names in lesson list will be highlighted if recently updated), recent grades (for Techs only), and lesson list that may be updated (by Support Engineering - see “Functional specs” documentation). Changes will be made once the LMS is chosen.

“About Lessons View” (Support Engineering Only):

This view is merely a **description of the lesson types and file types** that will be used in the LMS. Changes will be made once the LMS is chosen.

File types used for lessons and their corresponding quizzes/exams include current: Flash-based lessons, and HTML-based lessons, as well as future: Flash-based lessons, HTML-based lessons, and/or video-based/on-demand lessons.

*Note: **this does not include possible “live” online training sessions** which will be created through a web conferencing service (ex. Adobe Connect), though, as mentioned above, these “live” sessions may be recorded and later uploaded to the LMS as one of the video-based/on-demand lessons.

“Create Lesson View” (Support Engineering Only):

This view is the new **create lesson page/view**. Capabilities include: “Name Lesson”, “Upload Media for both Lesson and Quiz/Exam” (**file types: existing swf and html/asp, and swf and html/asp created using Captivate; *note: html files will need to be turned into asp manually before upload to site***), and “Add Intro/Description”. **Existing lessons and quizzes/exams will continue to be available** on future site, as well as **new lessons and quizzes/exams.**

opexservice.net Site Diagram Notes (Continued) p.3

“Edit Lesson View” (Support Engineering Only):

This represents the new **edit lesson page/view**. (See “Create Lesson View” for more details on capabilities.)

Adobe Captivate will be used to create new lessons, their corresponding quizzes/exams, and the individual lesson/quiz grade view/page shown at the end of lessons. (See “Take Lesson View” for info on viewing single grades, and “Grades View” for info on viewing all grades.) **Database involvement will be necessary to properly update/replace existing files with new files.** Changes will be made once the LMS is chosen.

“Take Lesson View” (Techs and Support Engineering Only)

This is the future page/view for **Techs to use for taking lessons**. Once a **lesson is chosen from the list on “SelectLesson02.asp” page, this “Take Lesson” page/view will display (database involvement is necessary for this)**.

Capabilities include: “View lesson”, “Take quiz/exam”, and “View grade/score”. The grade for the completed lesson and its corresponding quiz/exam may be viewed in the “Grades View”(see “Grades View” notes below). Changes will be made once the LMS is chosen.

“Grades View”:

This represents the future view/pages for **viewing all grades**; what is visible in this area depends upon permissions/privileges. Changes will be made to the following, once the LMS is chosen.

(Techs Only): Technicians will have the **“Grades List” and “Lessons to Retake”** capabilities available. The **“Grades List” will list all grades** for all quizzes/exams taken by that Technician. Users may click on a grade to access the corresponding lesson for review and, after, may retake quiz/exam (see “Flash View”, “HTML View” or “Video View” for more info on this. Categories (ex. pass/fail) or search capability may be added to this.

“Lessons to Retake” is the capability for Techs to view their in-house quiz/exam grades and a list (only) of in-house items to retake may be added.

(Managers Only): Regional Managers will have the **“Grades List: Searchable by Tech Name”** capability of the “Grades View” available so that they **may view the grades or pass/fail scores of Techs**. This capability may be created to only **show Techs from a specific region** (i.e. the Regional Managers will only see Techs from their region in the search). Additional grade search capabilities will most likely be added.

“Training Dashboard”:

The lesson-based capabilities included are: **“Create a New Lesson”** and **“Edit Existing Lesson”**. Additional capabilities may be added. Changes will be made to the following, once the LMS is chosen.

When a Support Engineering user wishes to add a new lesson, the “Create a New Lesson” capability will **allow them to upload their files, add a name to the lesson, set preferences, preview, and publish**.

Capability will be included for editing lessons. These capabilities will mirror those for the “Create a New Lesson View”. Changes will be made once the LMS is chosen.

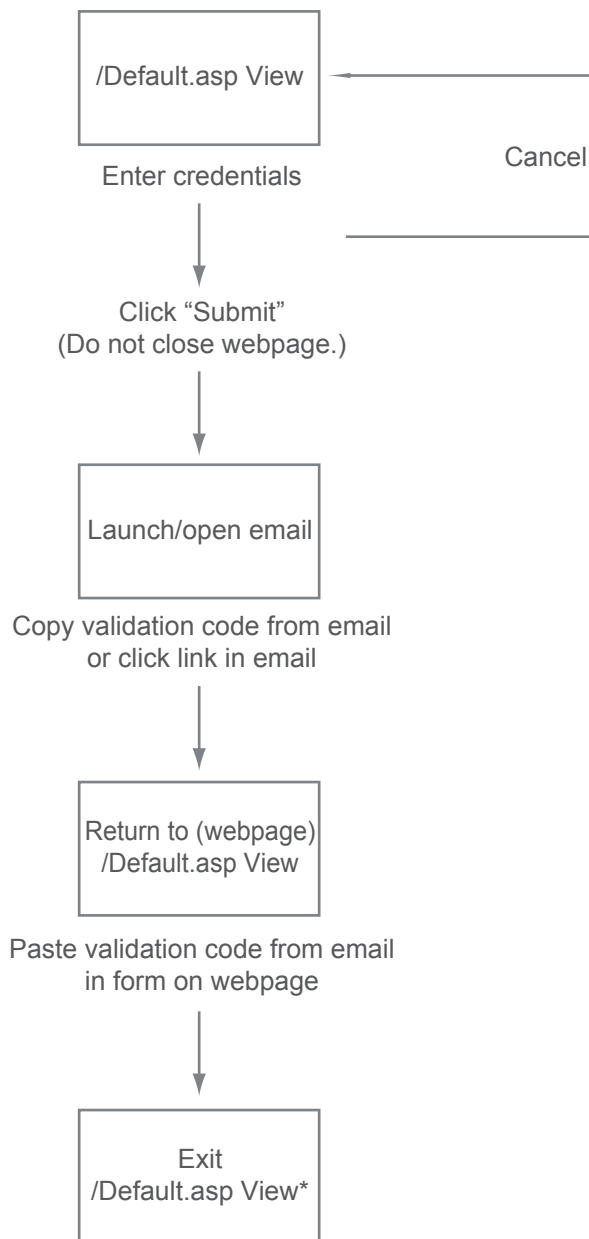
Task Analysis List

The following tasks are organized to match the site diagram:

- ◇ **Site Login** - The user logs in at “/Default.asp” by first entering their user name and password, then they will receive an email giving them a validation code which is needed to complete the second step of the login.
- ◇ **View/Edit Profile** - After logging in to the site, users will be able to view and/or edit their profile by using the User Nav on almost any page of the site and clicking “Profile”.
- ◇ **Help** - Should the user need assistance, they may access the “Help” area by using their User Nav from almost any page on the site.
- ◇ **Inventory** - The “Inventory” area can be accessed by Technician and Manager users - these users can find the “Inventory” button in the Main Nav.
- ◇ **Service Bulletins and Service Manuals** - The “Service Bulletins” and “Service Manuals” areas can be accessed by clicking on the corresponding link in the “Service Documents” dropdown menu.
- ◇ **Grades** - The “Grades” area can be accessed by clicking on “Grades” in the “Training” dropdown menu.
- ◇ **Create Lesson/Edit Lesson** - Support Engineering users can create or edit a lesson by using the “Training Dashboard” which they can access by clicking the link in the Support Engineering dropdown menu.
- ◇ **Take Lesson (Includes Quiz/Exam)** - Technicians, Managers, and Support Engineering users can access the “Take Lesson” page using their respective dropdown menus or the “Training” dropdown menu and clicking on “Lessons”.

OPEXSERVICE.NET TASKFLOW DIAGRAM

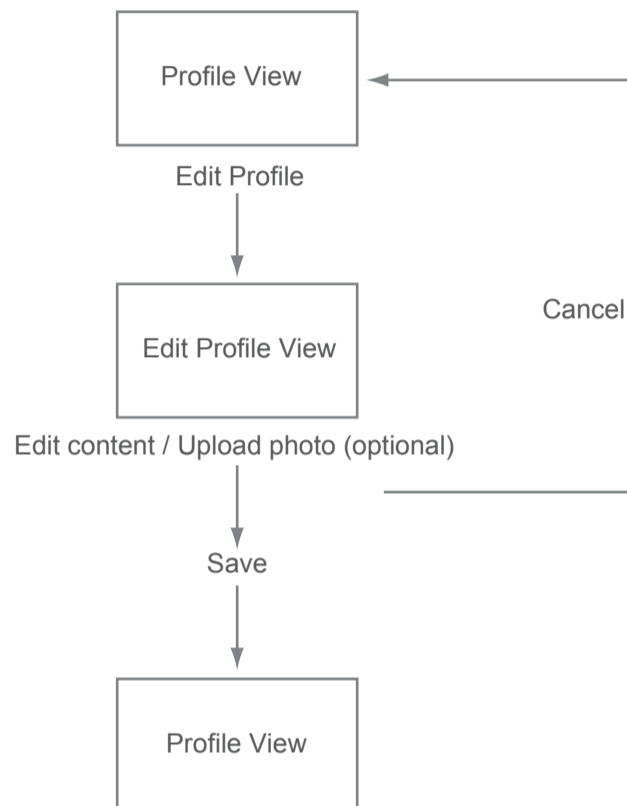
SITE LOG IN AT /DEFAULT.ASP



*User may exit "/Default.asp" after login, and entering of the validation code, using the Main Nav.

OPEXSERVICE.NET TASKFLOW DIAGRAM

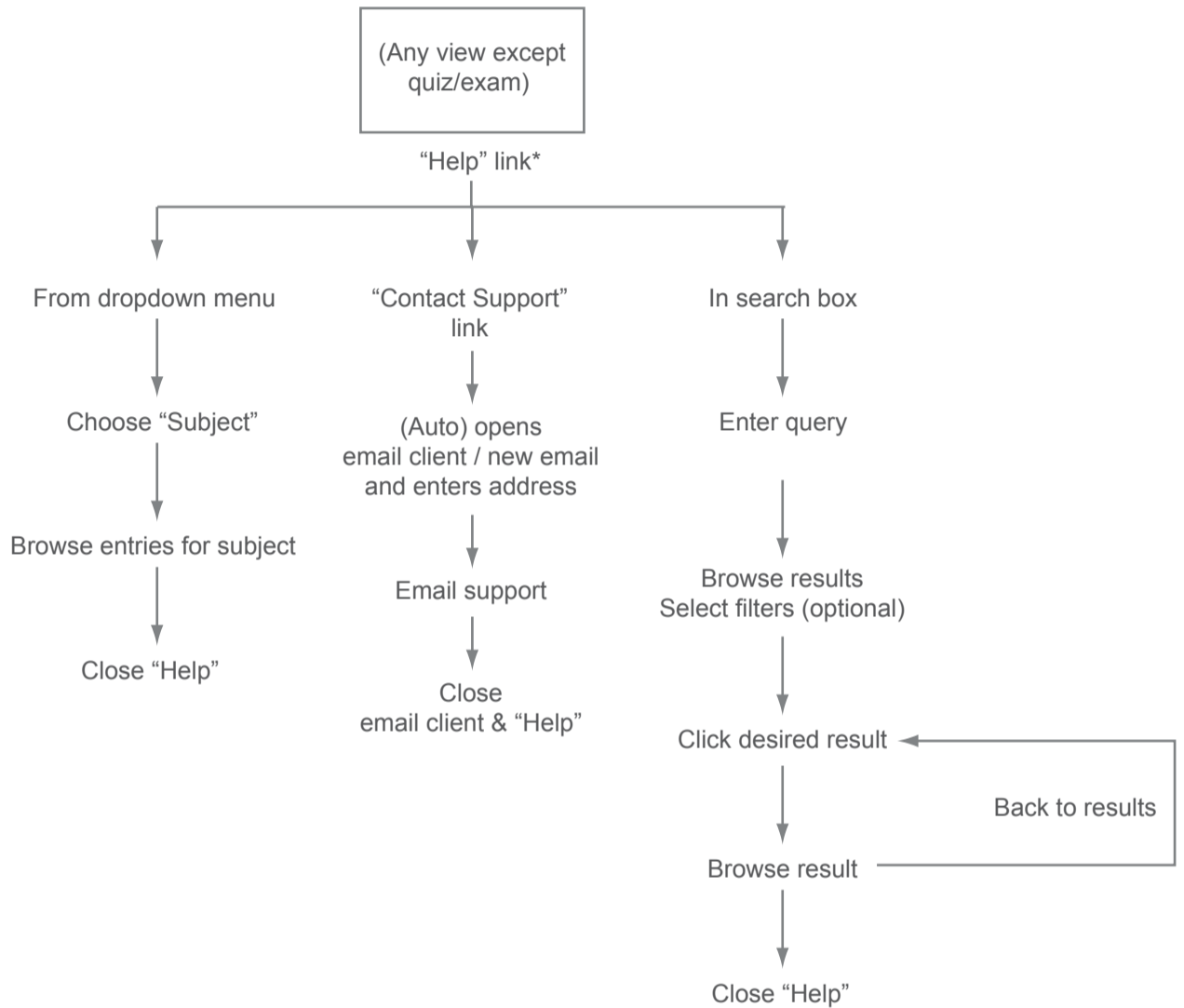
VIEW PROFILE / EDIT PROFILE



*User may exit "Profile" at any time using main nav.

OPEXSERVICE.NET TASKFLOW DIAGRAM

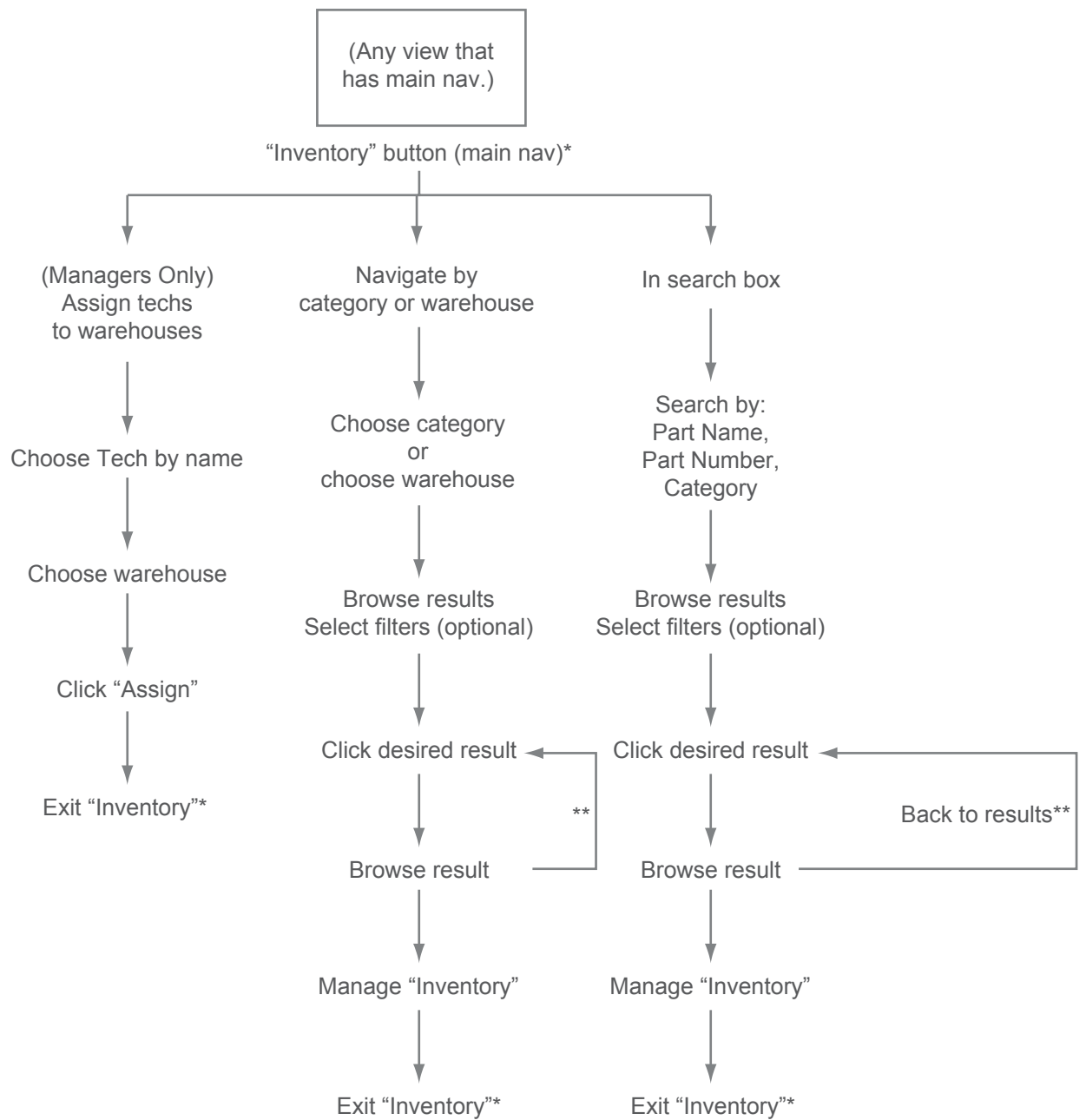
HELP



*User may exit "Help" at any time by using the main nav.

OPEXSERVICE.NET TASKFLOW DIAGRAM

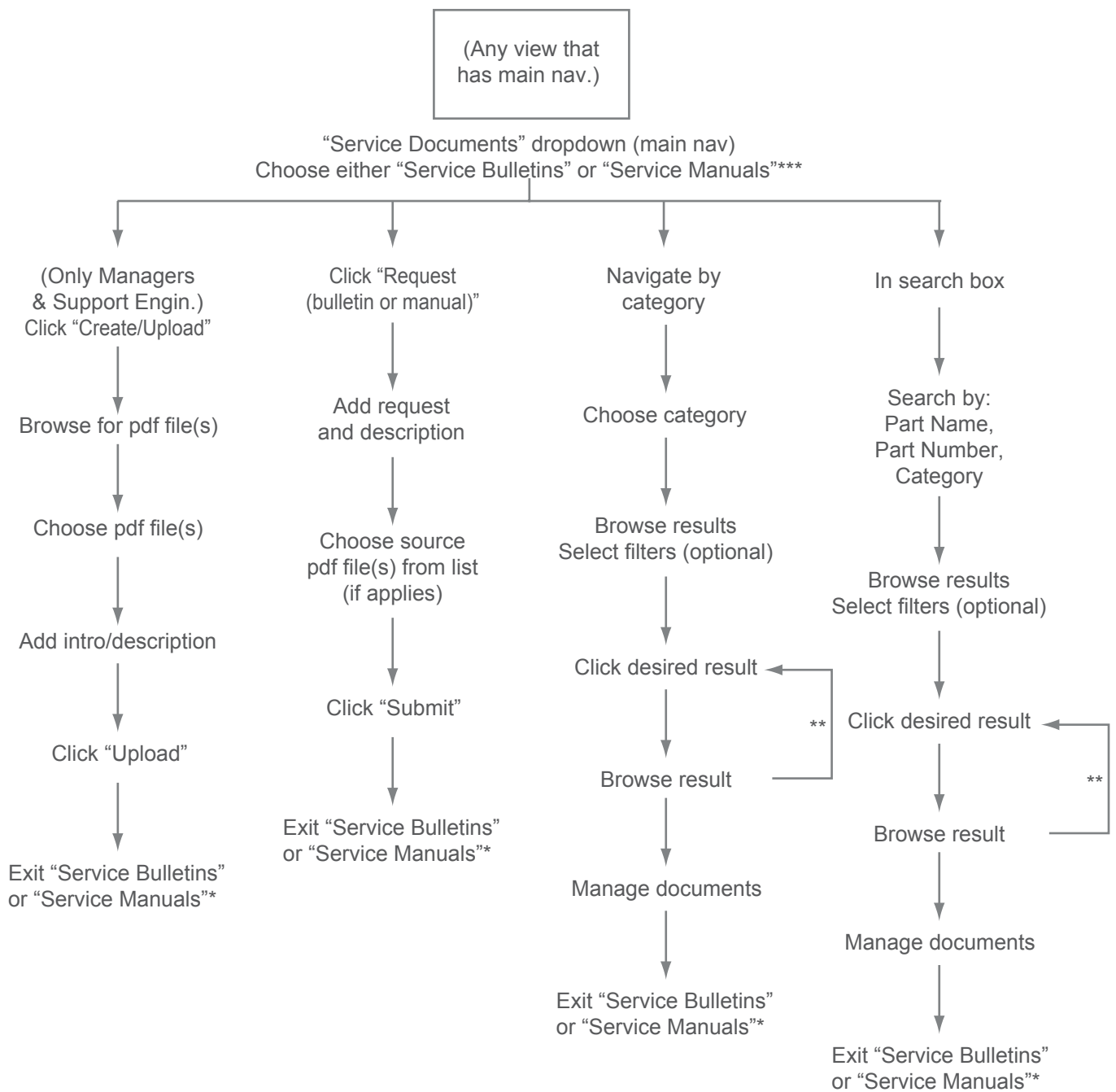
INVENTORY (TECHS & MANAGERS ONLY)



*User may exit "Inventory" at any time by using the main nav.

OPEXSERVICE.NET TASKFLOW DIAGRAM

“SERVICE BULLETINS” AND “SERVICE MANUALS”



*User may exit either “Service Bulletins” or “Service Manuals” at any time by using the main nav.

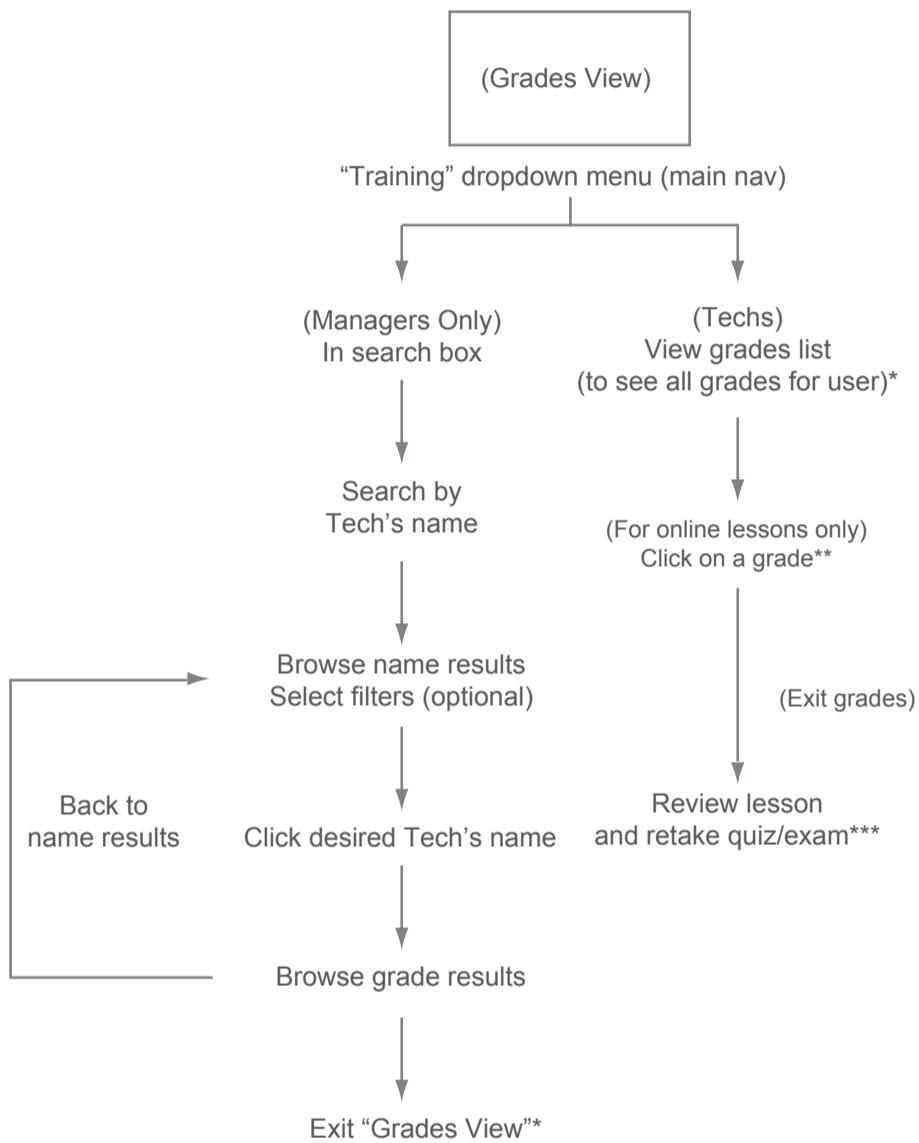
**Back to results.

****“Service Bulletins” and “Service Manuals”, at the time of this diagram, were separate areas of the site, though they may be combined in future.

OPEXSERVICE.NET TASKFLOW DIAGRAM

GRADES (ALL)

(TECHS & MANAGERS ONLY)



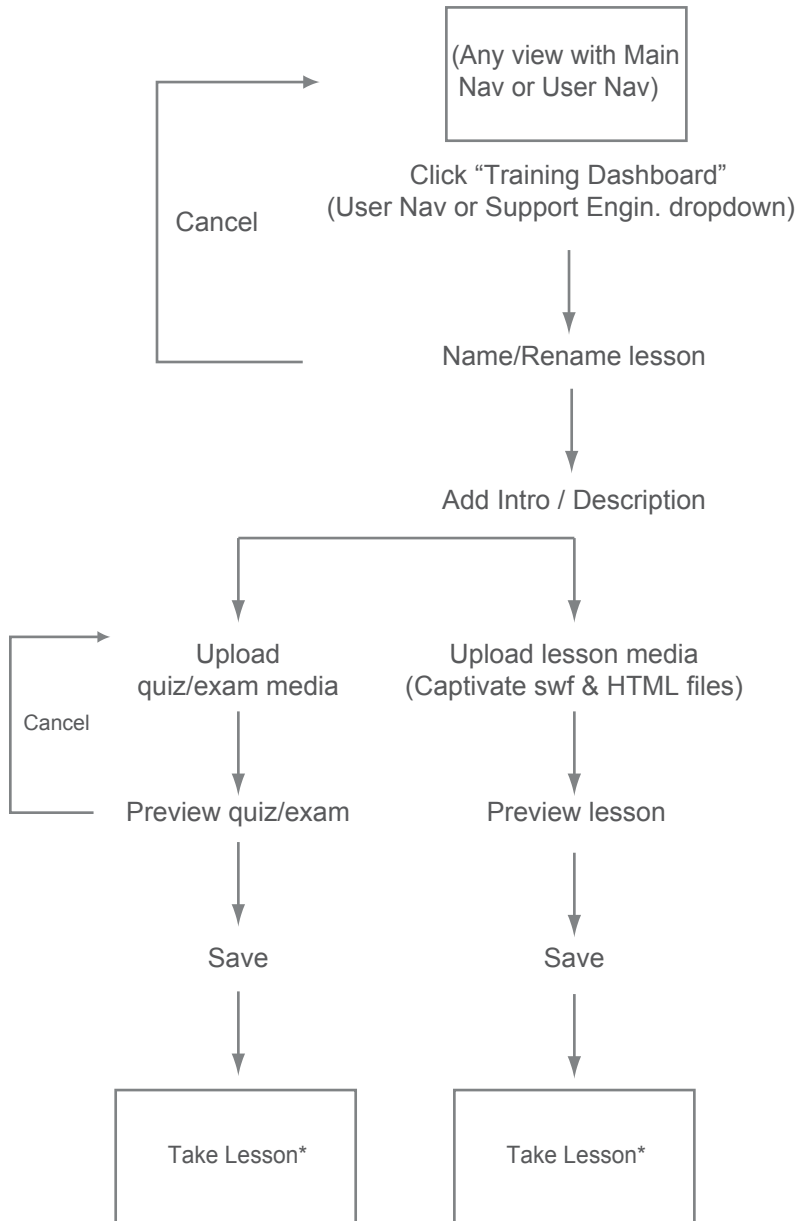
*User may exit "Grades" at any time by using the main nav.

**Only online lessons may be retaken through site; only failing in-house grades will be listed under "Lessons to Retake".

***See lesson taskflow diagram for more info.

OPEXSERVICE.NET TASKFLOW DIAGRAM

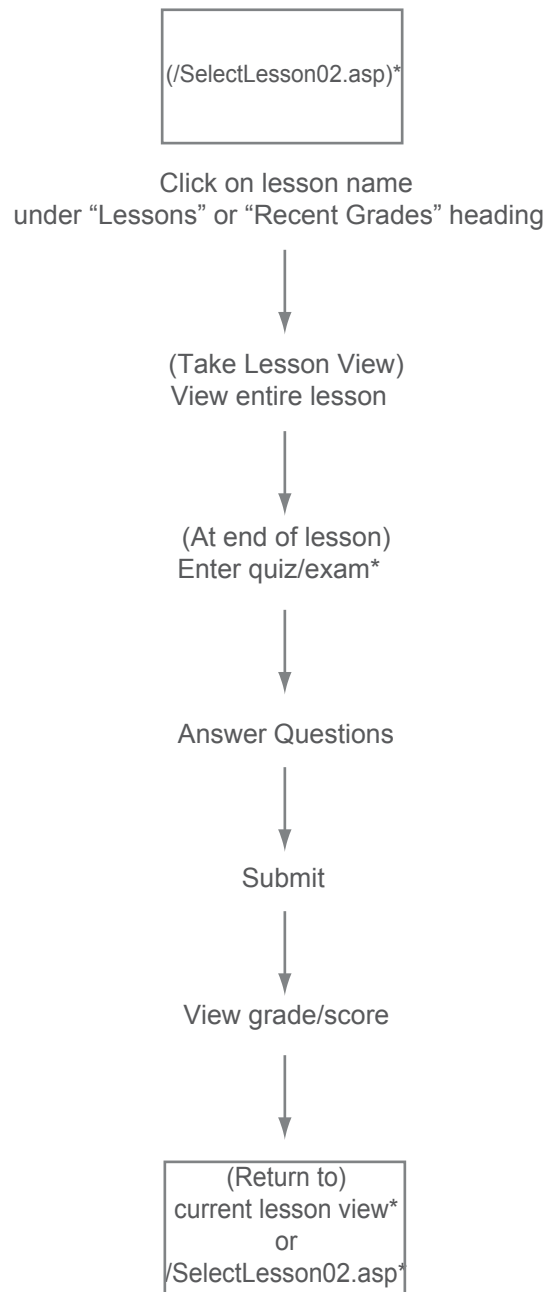
TRAINING DASHBOARD: CREATE A LESSON / EDIT A LESSON (SUPPORT ENGINEERING ONLY)



*User may exit "Lessons" at any time by using the main nav.

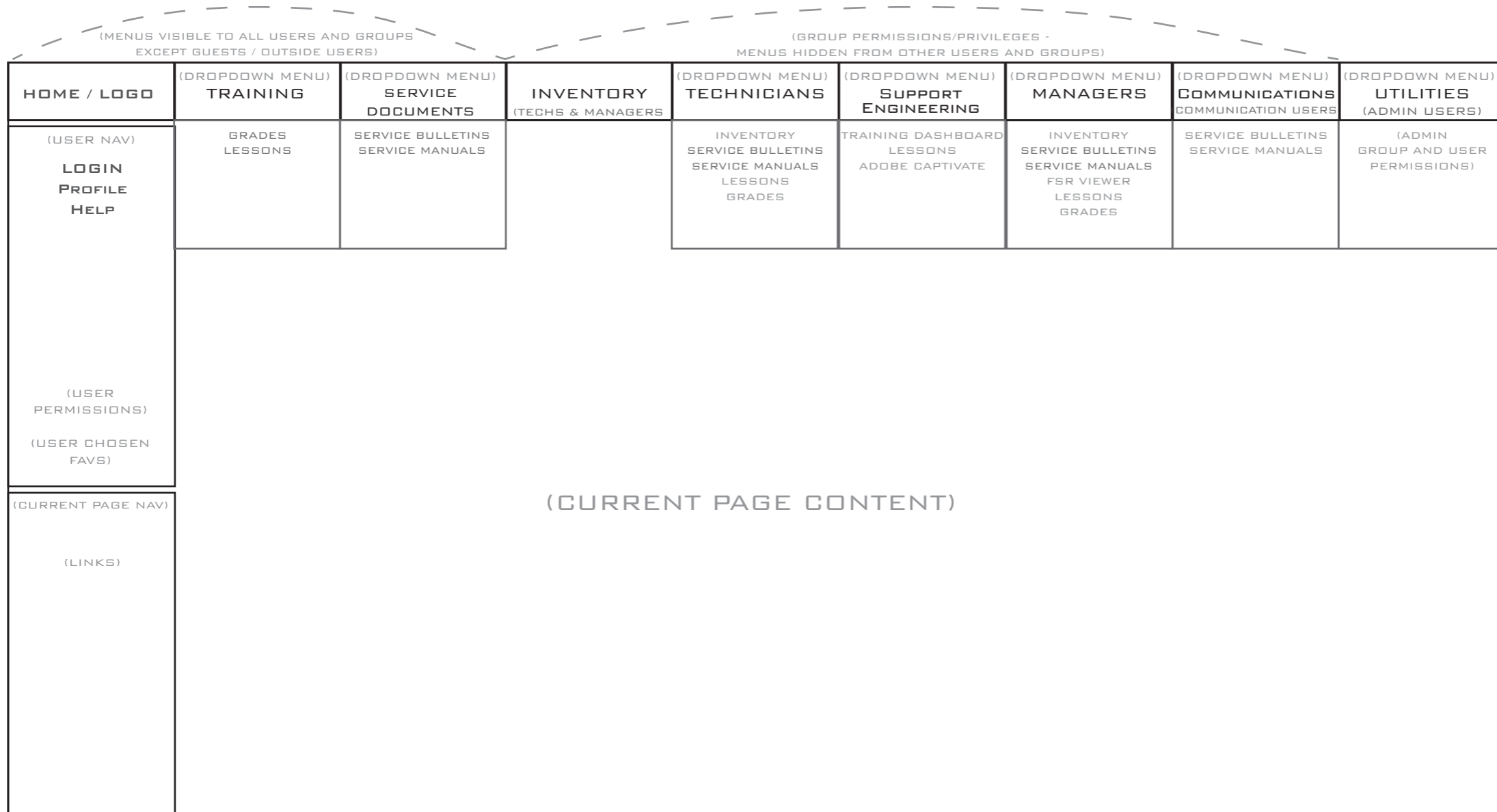
OPEXSERVICE.NET TASKFLOW DIAGRAM

TAKE A LESSON (INCLUDES QUIZ/EXAM) (TECHS ONLY)



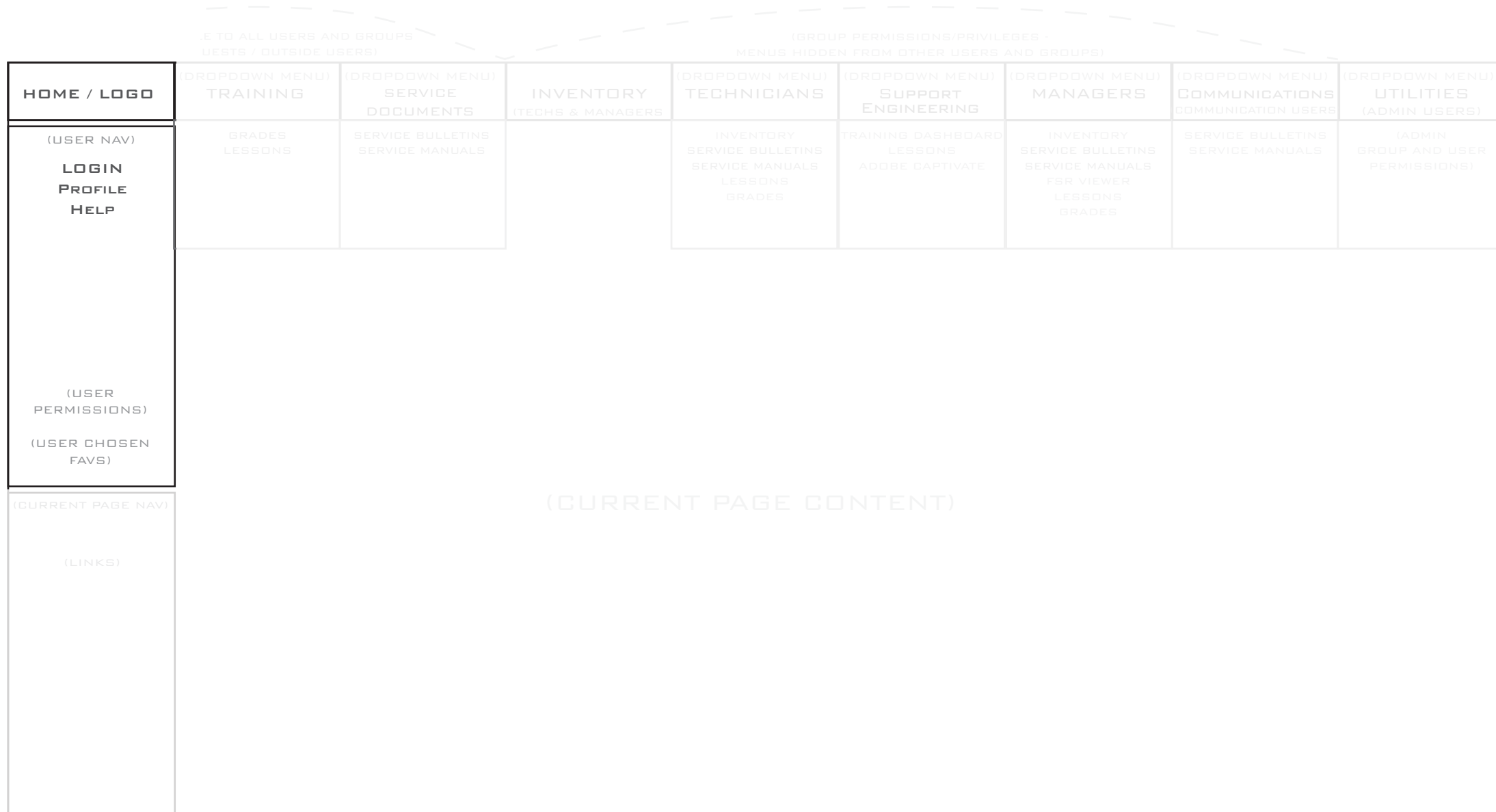
*Main Nav may be used at any time to exit until **.

**Before this point, Main Nav will be available for exiting; however, after this point, until user returns to lesson view, they may not exit quiz/exam until all questions are answered, quiz is submitted, and grade is viewed.



NOTES:

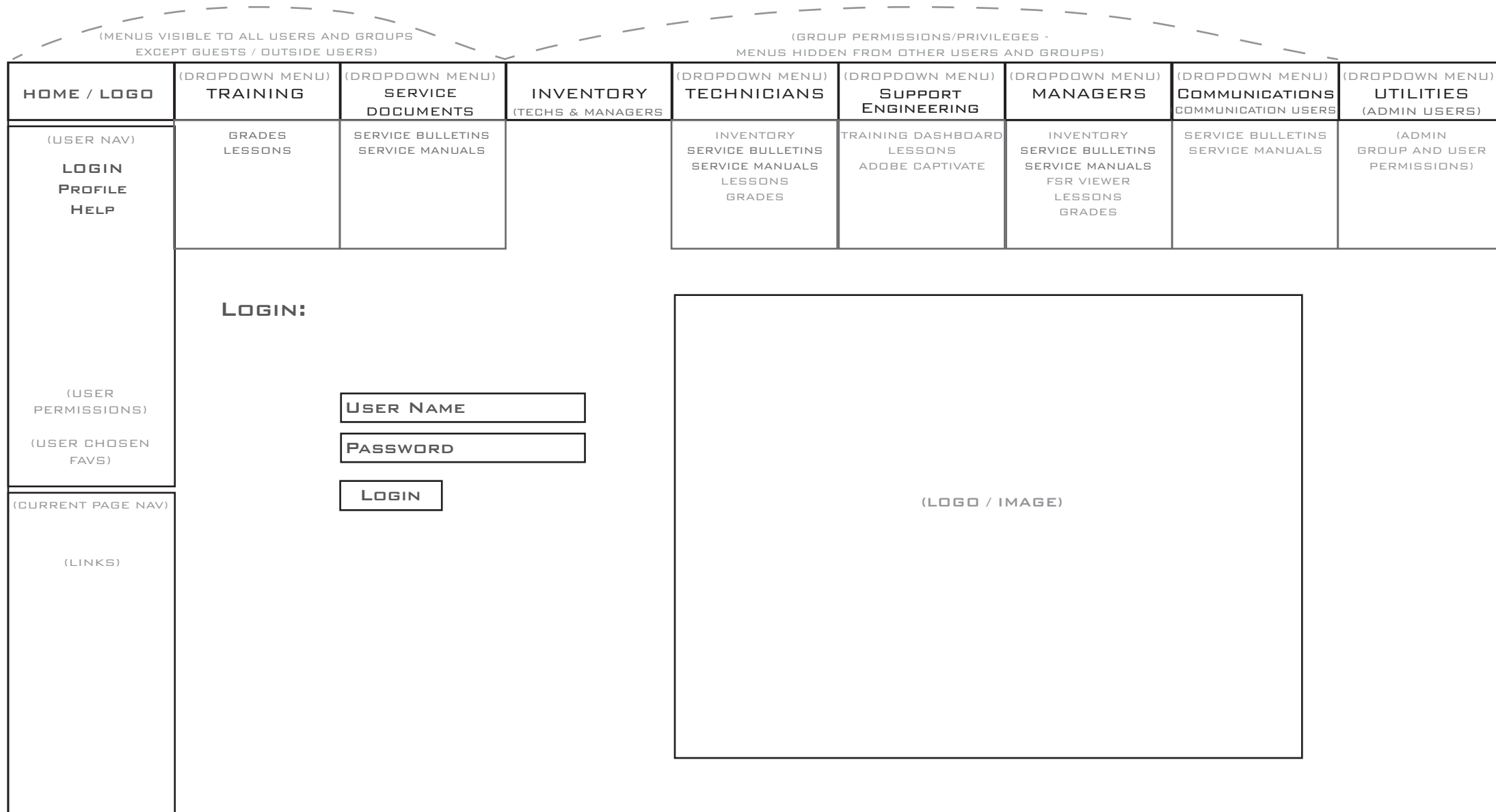
- ITEMS THAT WILL ACTUALLY BE VISIBLE ON THE SITE ARE DARK - THIS INCLUDES TEXT AND SHAPES.
- ALL (NOTES), INCLUDING TEXT AND SHAPES, ARE GRAYED OUT BECAUSE THEY WILL NOT BE VISIBLE ON SITE.
- DROPDOWN MENUS, BOTH TEXT AND SHAPES, ARE GRAYED OUT BECAUSE A DROPDOWN MENU WILL ONLY BE VISIBLE ON THE SITE WHEN A USER, WITH ADEQUATE PERMISSIONS/PRIVILEGES, Mouses-over OR clicks ON AN ITEM IN THE DROPDOWN MENU. SEVERAL MENUS ARE ONLY VISIBLE TO USERS WITH SPECIFIC PERMISSIONS/PRIVILEGES.
- SOME FORM OF BOTH THE User Nav, AND Page Nav, WILL BE VISIBLE ON ALL PAGES OF THE SITE, EXCEPT FOR QUIZZES AND PAGES WITH SIMILAR SECURITIES (BOTH ARE GRAYED OUT AND SHOWN HERE ONLY TO ILLUSTRATE THE LOCATION OF THE MAIN NAV IN COMPARISON).



- NOTES:**
- SOME FORM OF THE USER NAV WILL BE VISIBLE ON ALL PAGES OF THE SITE, EXCEPT FOR QUIZZES AND PAGES WITH SIMILAR SECURITIES.
 - MAIN NAV IS ALSO SHOWN (BUT GRAYED OUT) TO ILLUSTRATE THE USER NAV'S POSITION IN PROXIMITY TO MAIN NAV.
 - CURRENT PAGE NAV IS ALSO SHOWN (BUT GRAYED OUT) FOR THE SAME REASON.

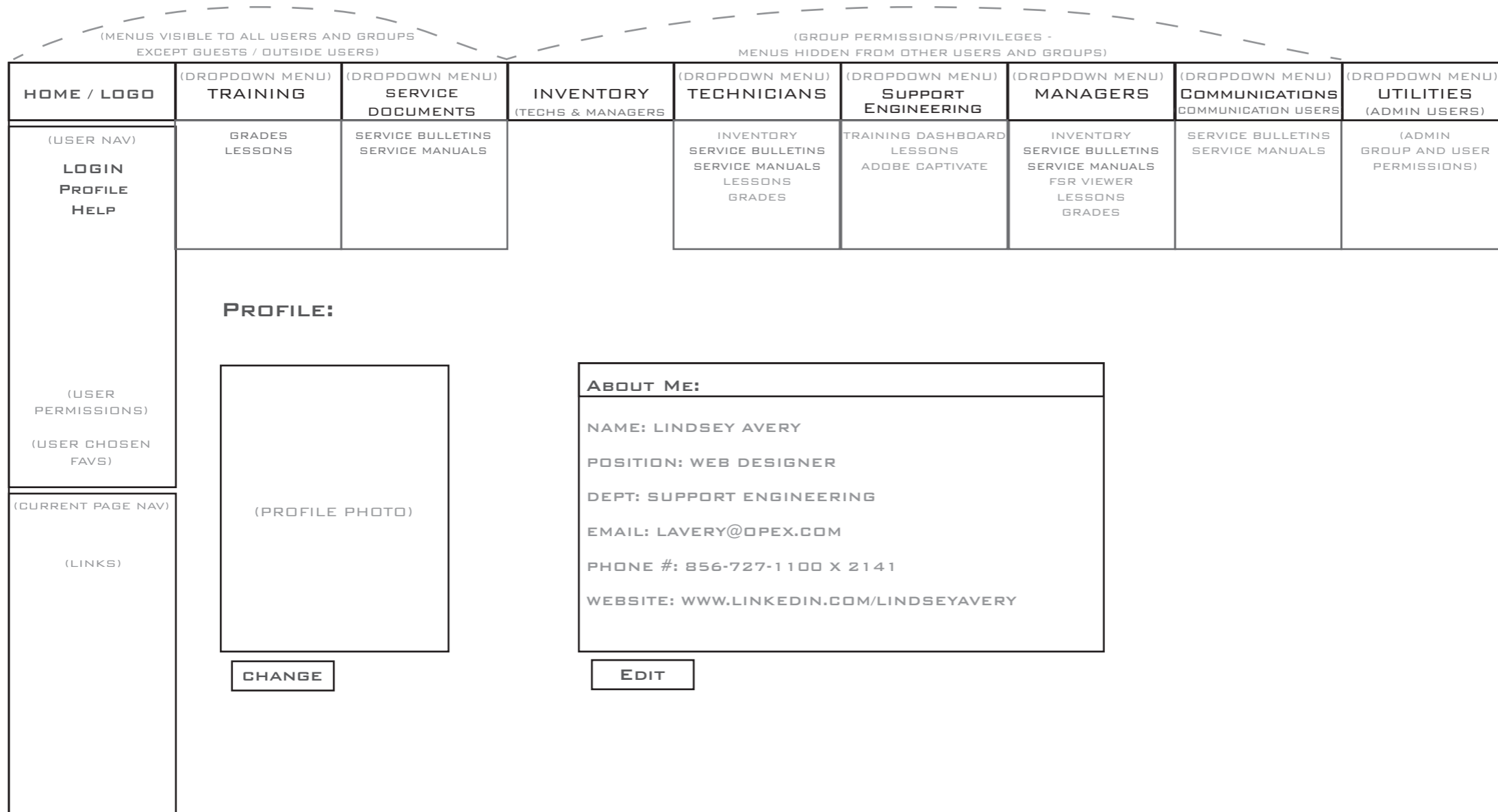


- NOTES:**
- SOME FORM OF PAGE NAV WILL BE VISIBLE ON ALL PAGES OF THE SITE, EXCEPT FOR QUIZZES AND PAGES WITH SIMILAR SECURITIES.
 - MAIN NAV IS ALSO SHOWN (BUT GRAYED OUT) TO ILLUSTRATE THE PAGE NAV'S POSITION IN PROXIMITY TO MAIN NAV.
 - USER NAV IS ALSO SHOWN (BUT GRAYED OUT) FOR THE SAME REASON.



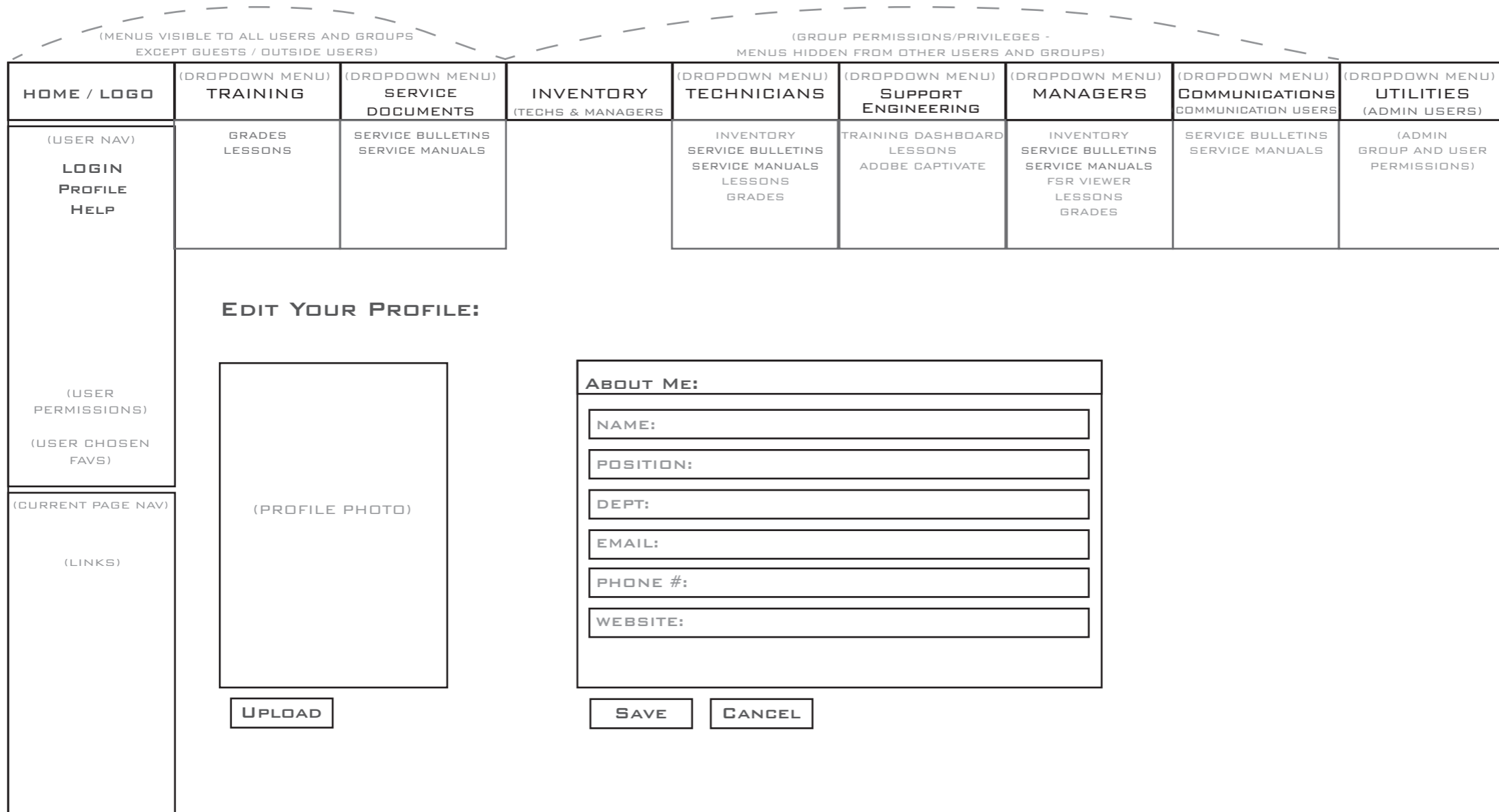
NOTES:

- THIS IS THE LANDING/LOGIN PAGE FOR THE OPEXSERVICE.NET SITE.
- NOTE: THERE IS A LOGIN FORM IN THE BODY OF THE LANDING PAGE ITSELF, AS WELL AS A REDUNDANT LOGIN IN THE USER NAV.
- ALSO, IN THE CURRENT PAGE NAV., THERE IS A LINK TO HELP THOSE WHO HAVE TROUBLE LOGGING IN.



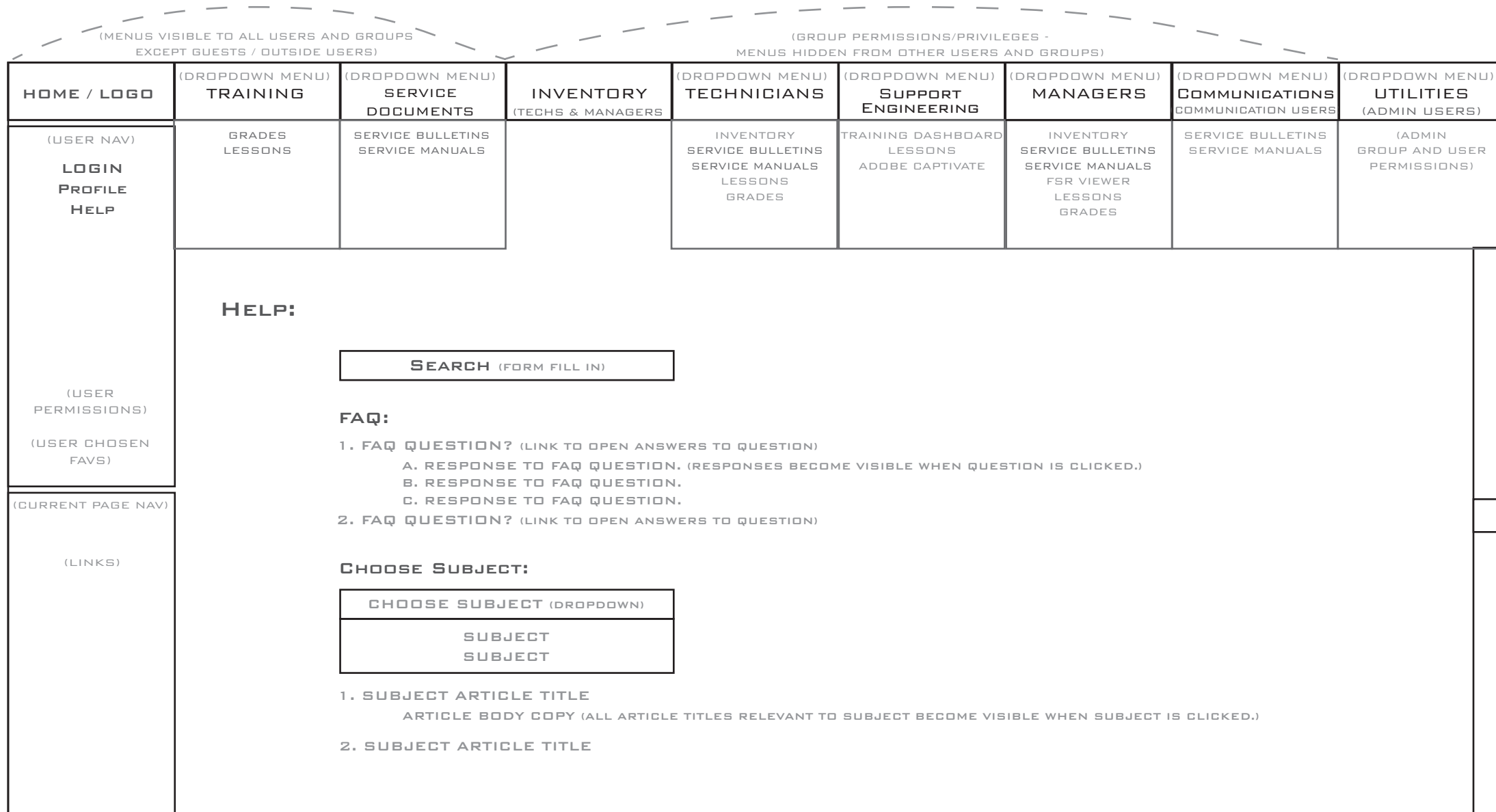
NOTES:

- THIS IS THE PROFILE PAGE FOR THE OPEXSERVICE.NET SITE.
- CAPABILITIES INCLUDE: ABLE TO VIEW CURRENT PROFILE, AND USE EITHER LINK "EDIT PROFILE" IN LEFT PAGE NAV., OR "EDIT" BUTTON UNDER PROFILE INFO TO ACCESS THE EDIT PROFILE PAGE WHERE USERS CAN CHANGE ALL PROFILE INFO AND UPLOAD A NEW PHOTO; ALSO USERS CAN CHOOSE TO ONLY UPLOAD A NEW PHOTO BY USING THE "CHANGE" BUTTON UNDER THE PROFILE PHOTO HERE.



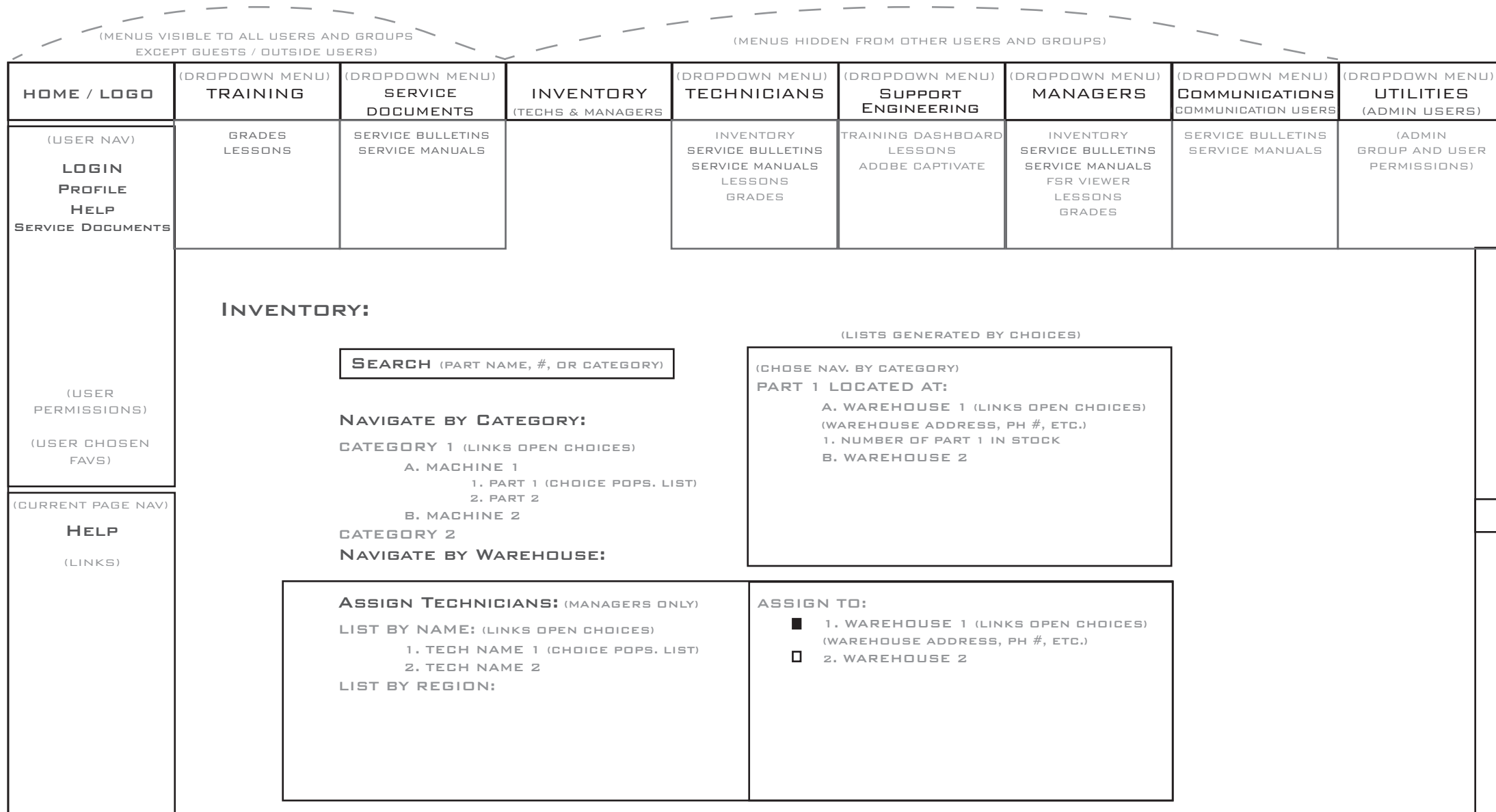
NOTES:

- THIS IS THE EDIT PROFILE PAGE FOR THE OPEXSERVICE.NET SITE.
- ONLY INDIVIDUAL USERS WILL HAVE ACCESS TO EDIT THEIR OWN INFO IN THIS EDIT PROFILE PAGE.
- CAPABILITIES INCLUDE: ABLE TO TYPE IN NEW PROFILE INFO INTO THE FORM UNDER "ABOUT ME" HERE AND SAVE IT BY CLICKING THE "SAVE" BUTTON; ACCESS TO UPLOAD A NEW PROFILE PHOTO. USERS CAN USE THE "VIEW PROFILE" LINK IN THE LEFT PAGE NAV. TO RETURN TO VIEW PROFILE PAGE.



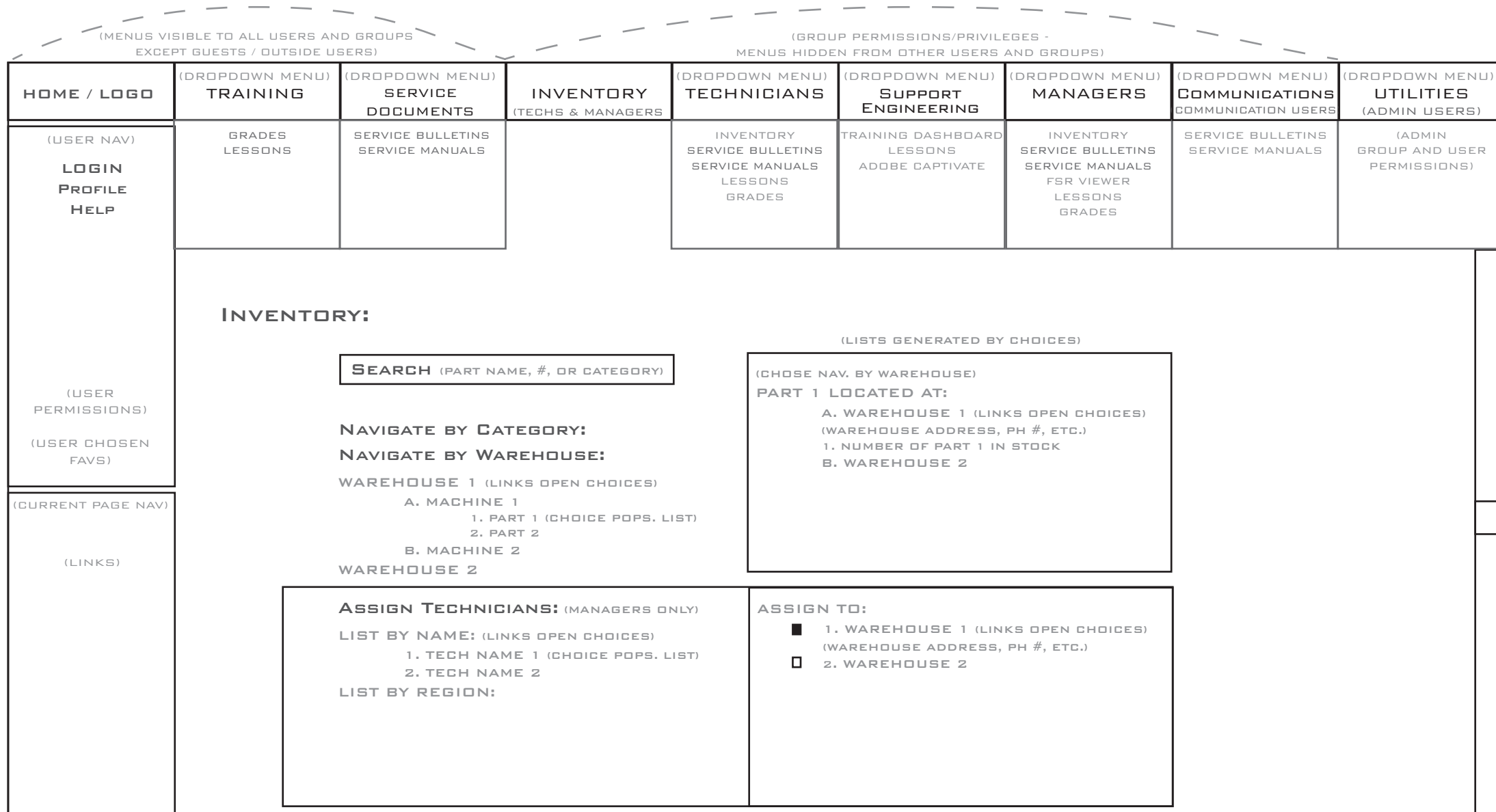
NOTES:

- THIS IS THE "HELP" PAGE FOR THE OPEXSERVICE.NET SITE.
- CAPABILITIES WILL INCLUDE A "SEARCH" BAR/FORM THAT CAN BE USED TO SEARCH TOPICS BY NAME, A "FAQ" SECTION WHERE FREQUENTLY ASKED QUESTIONS WILL BE LISTED AND MAY BE CLICKED ON TO OPEN THE CORRESPONDING ANSWERS, AND A NAVIGATE BY SUBJECT FEATURE SHOWN HERE AS THE "CHOOSE SUBJECT (DROPDOWN)" WHICH, WHEN THE SUBJECT IS SELECTED, WILL DISPLAY ALL RELATED SUBJECT ARTICLES' TITLES THAT MAY BE CLICKED ON TO DISPLAY THE CORRESPONDING ARTICLE BODY COPY.
- THIS PAGE INCLUDES A SCROLL BAR ON THE SIDE.



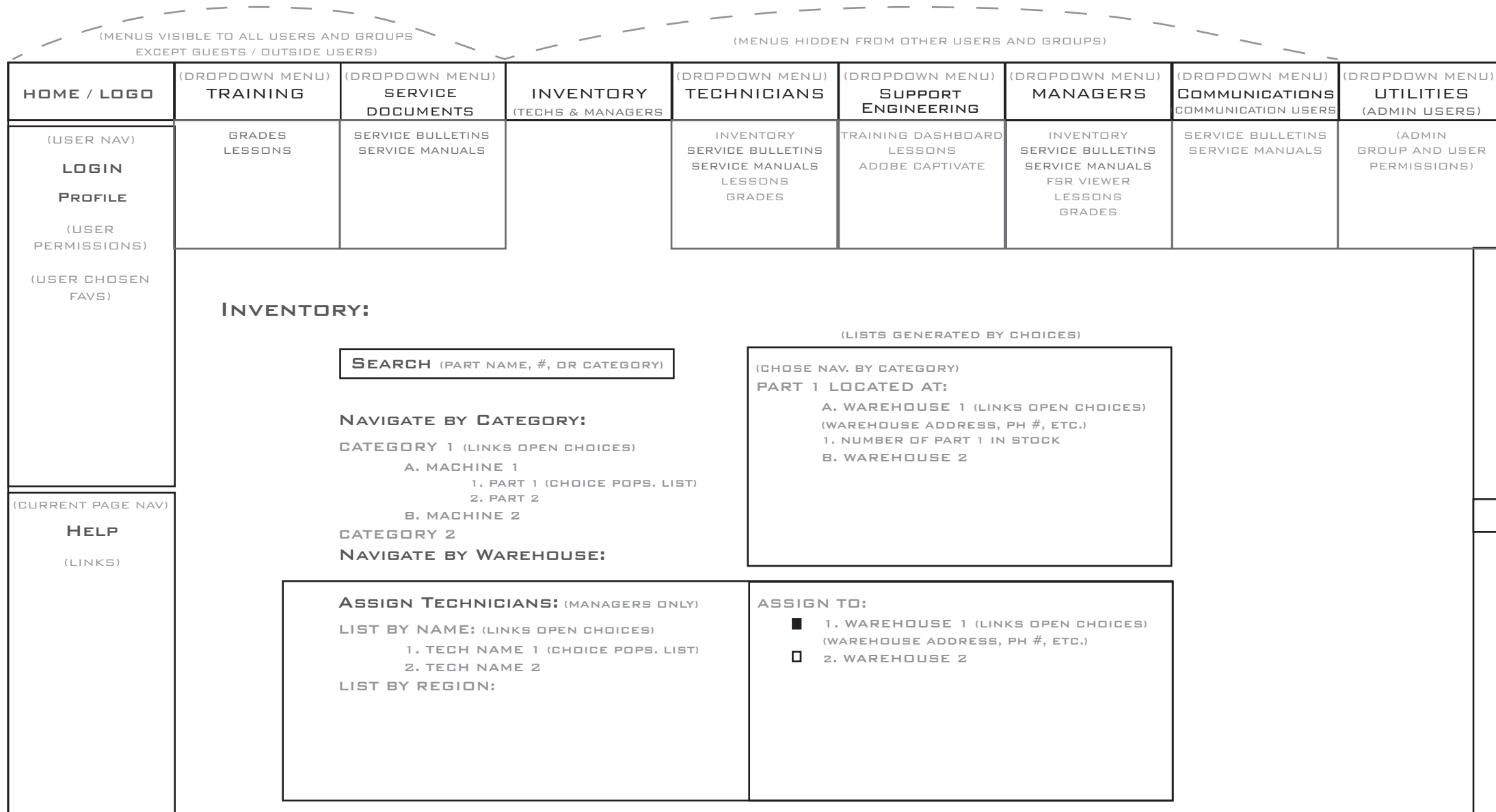
NOTES:

- THIS IS THE "INVENTORY" PAGE FOR THE OPEXSERVICE.NET SITE (DISPLAYING "NAV, BY CATEGORY" CHOICE LISTS).
- CAPABILITIES WILL INCLUDE A "SEARCH" BAR/FORM TO SEARCH BY PART NAME, PART #, OR CATEGORY, NAVIGATION BY EITHER CATEGORY OR WAREHOUSE, AND ASSIGNING TECHS TO WAREHOUSES (MANAGERS ONLY).
- THIS PAGE INCLUDES A SCROLL BAR ON THE SIDE.



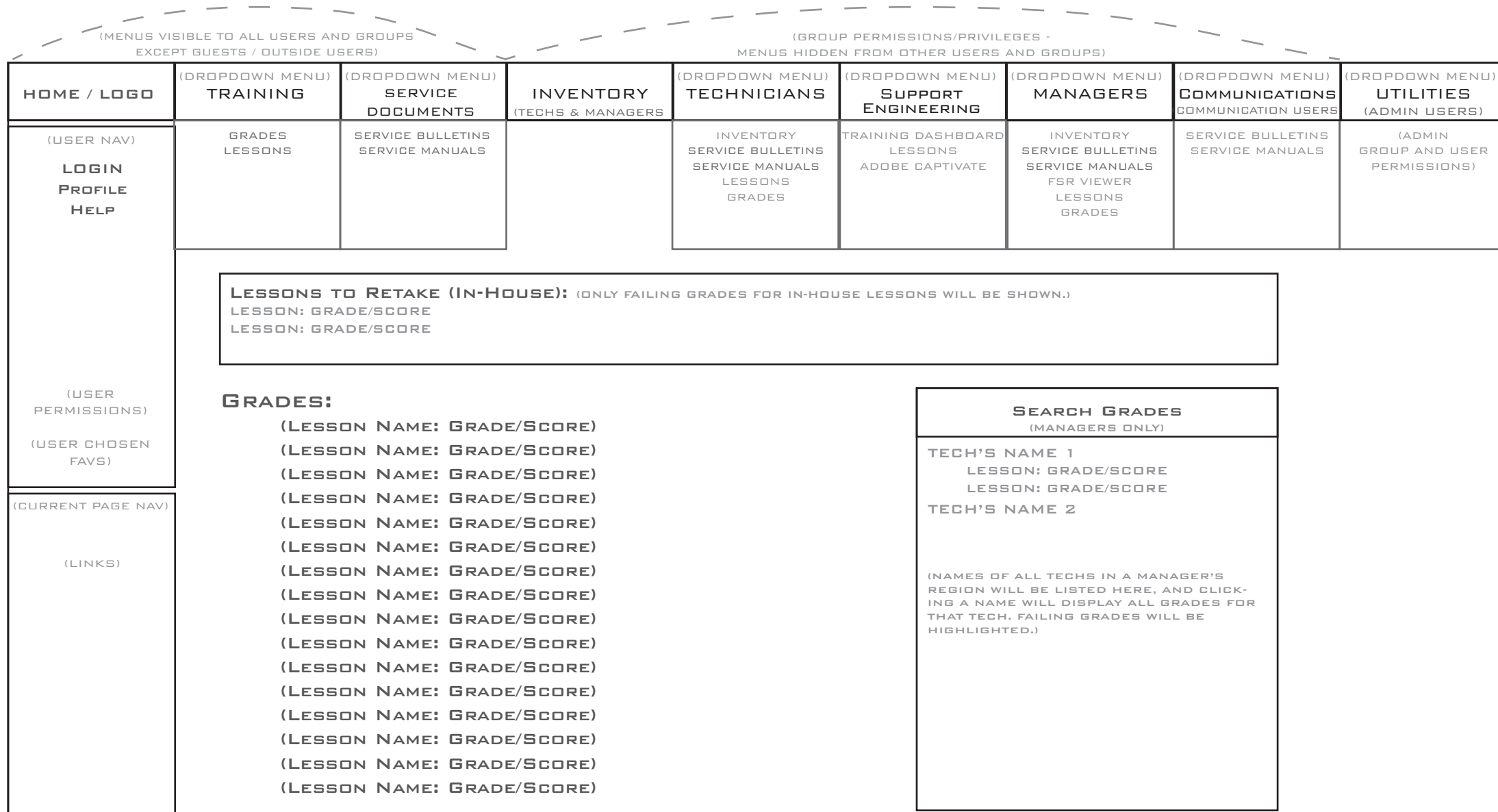
NOTES:

- THIS IS THE "INVENTORY" PAGE FOR THE OPEXSERVICE.NET SITE (DISPLAYING "NAV, BY WAREHOUSE" CHOICE LISTS).
- CAPABILITIES WILL INCLUDE A "SEARCH" BAR/FORM TO SEARCH BY PART NAME, PART #, OR CATEGORY, NAVIGATION BY EITHER CATEGORY OR WAREHOUSE, AND ASSIGNING TECHS TO WAREHOUSES (MANAGERS ONLY).
- THIS PAGE INCLUDES A SCROLL BAR ON THE SIDE.



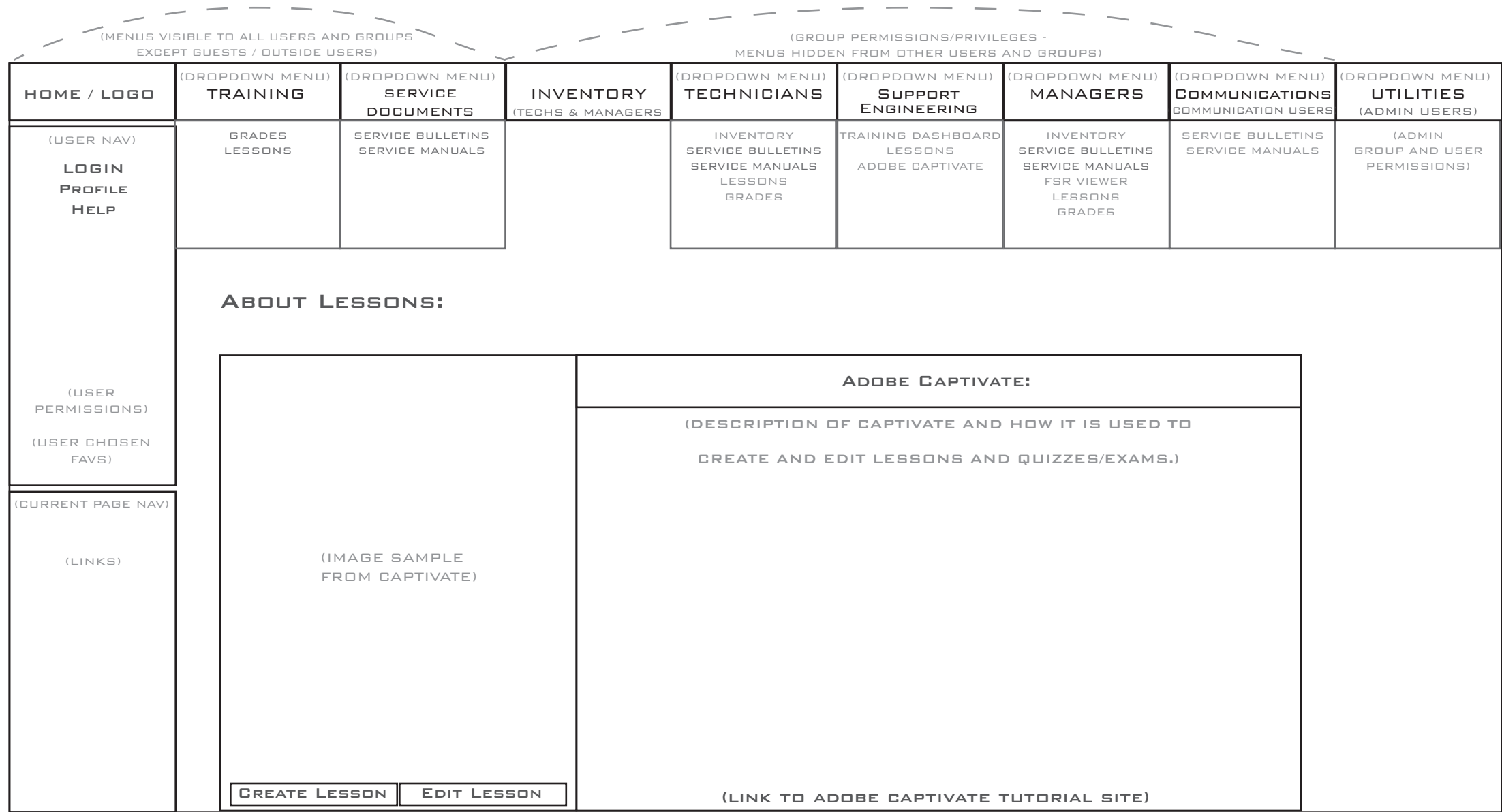
NOTES:

- THIS IS ONE OF ERIC'S PROJECTS, SO I HAVE ONLY CREATED A POSSIBLE LAYOUT TO GO ALONG WITH THE CORRESPONDING POSSIBLE TASK FLOW DIAGRAM.
- THESE ARE BOTH THE "SERVICE BULLETINS" AND "SERVICE MANUALS" PAGES FOR THE OPEXSERVICE.NET SITE.
- CAPABILITIES WILL INCLUDE A "SEARCH" BAR/FORM _____
- THIS PAGE INCLUDES A SCROLL BAR ON THE SIDE.



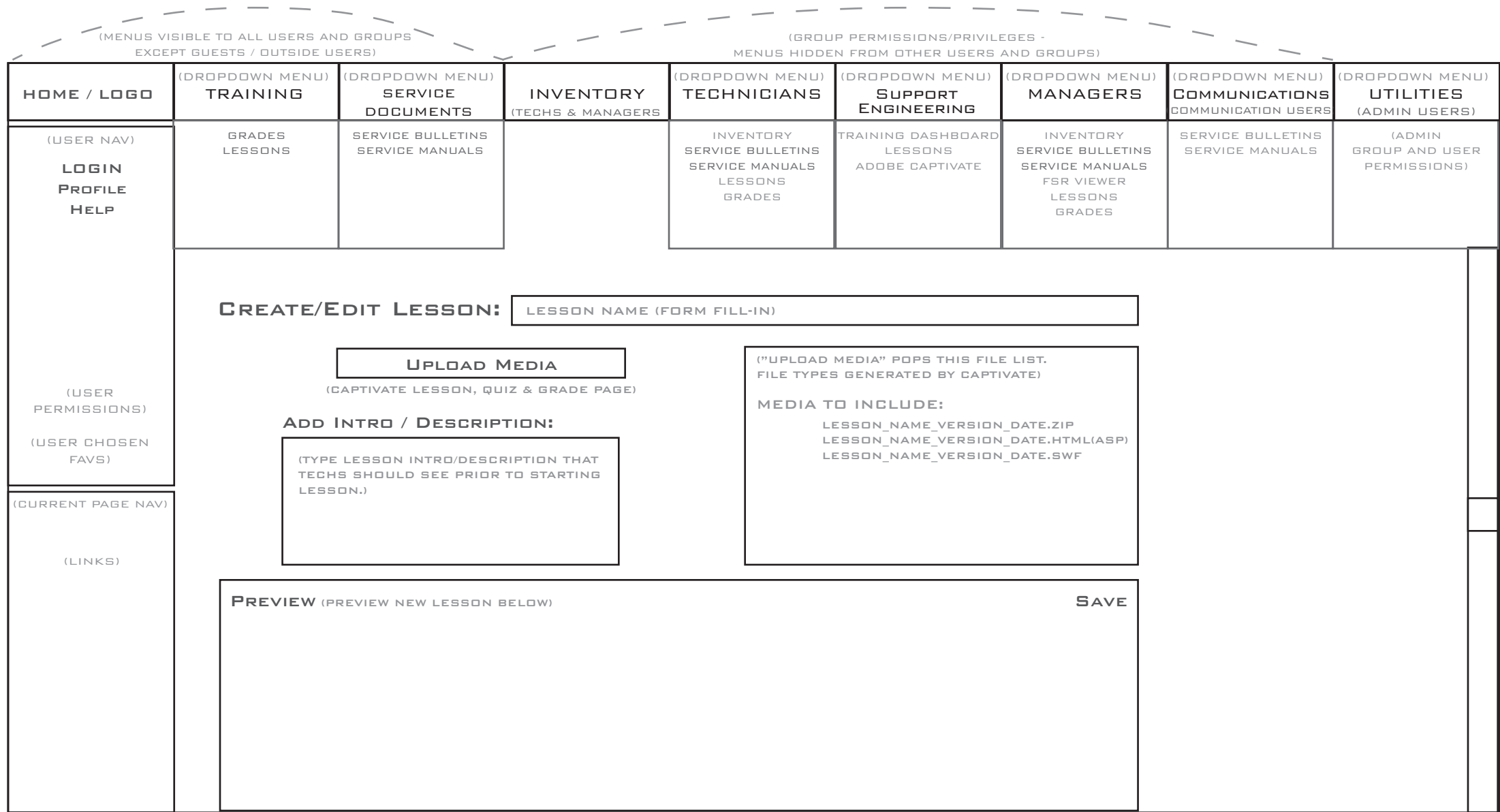
NOTES:

- THIS IS /SELECTLESSON02.ASP FOR THE NEW OPEXSERVICE.NET SITE.
- CAPABILITIES INCLUDE: TECHNICIANS CAN VIEW ALL OF THEIR GRADES LISTED HERE, AS WELL AS VIEW ANY LESSONS THAT NEED TO BE RETAKEN IN-HOUSE; (MANAGERS ONLY) ARE ABLE TO SEARCH-BY-NAME AND VIEW GRADES OF THEIR TECHS.



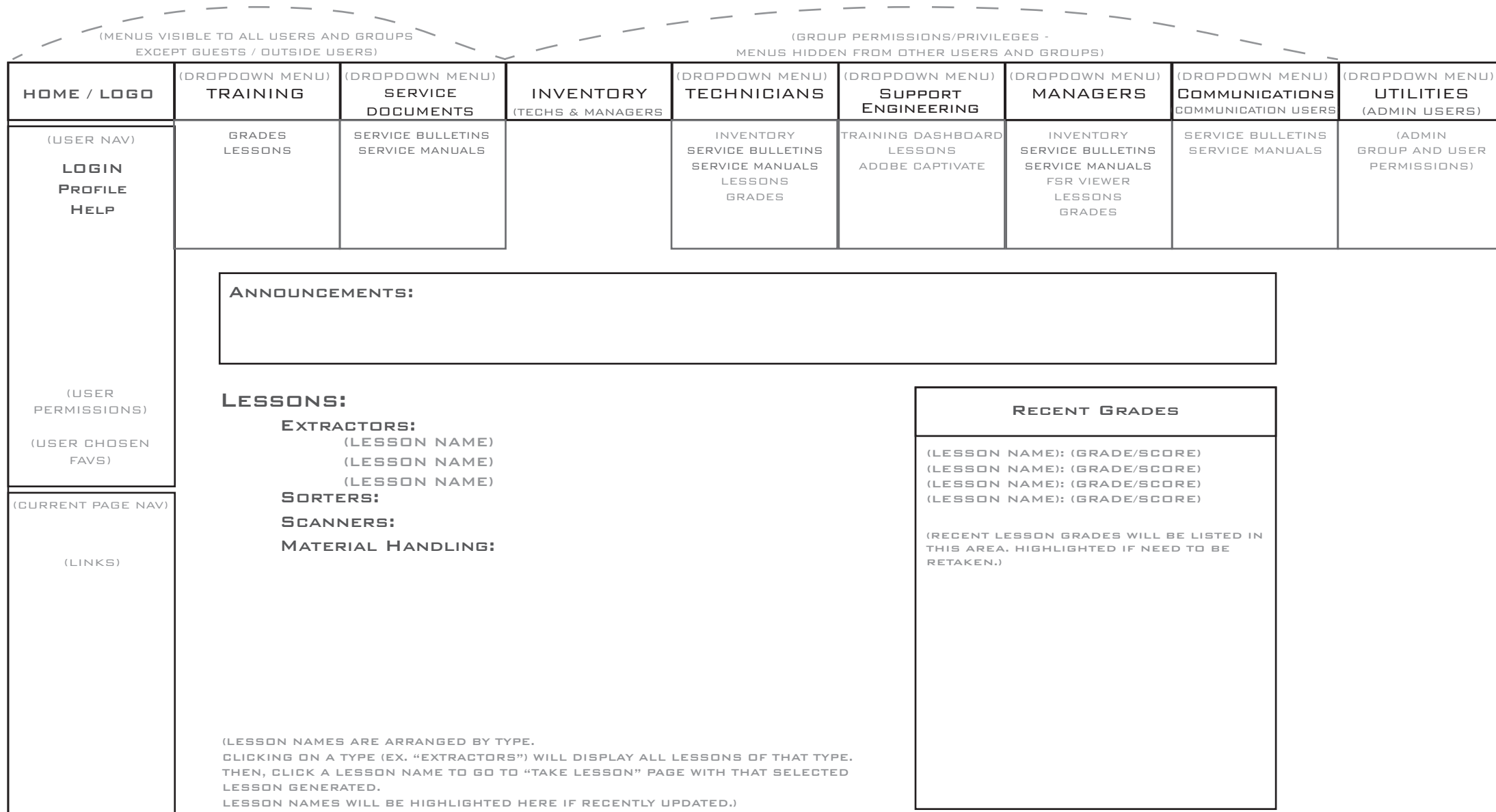
NOTES:

- THIS IS THE PROFILE PAGE FOR THE OPEXSERVICE.NET SITE.
- CAPABILITIES INCLUDE: ABLE TO VIEW CURRENT PROFILE, AND USE EITHER LINK "EDIT PROFILE" IN LEFT PAGE NAV., OR "EDIT" BUTTON UNDER PROFILE INFO TO ACCESS THE EDIT PROFILE PAGE WHERE USERS CAN CHANGE ALL PROFILE INFO AND UPLOAD A NEW PHOTO; ALSO USERS CAN CHOOSE TO ONLY UPLOAD A NEW PHOTO BY USING THE "CHANGE" BUTTON UNDER THE PROFILE PHOTO HERE.



NOTES:

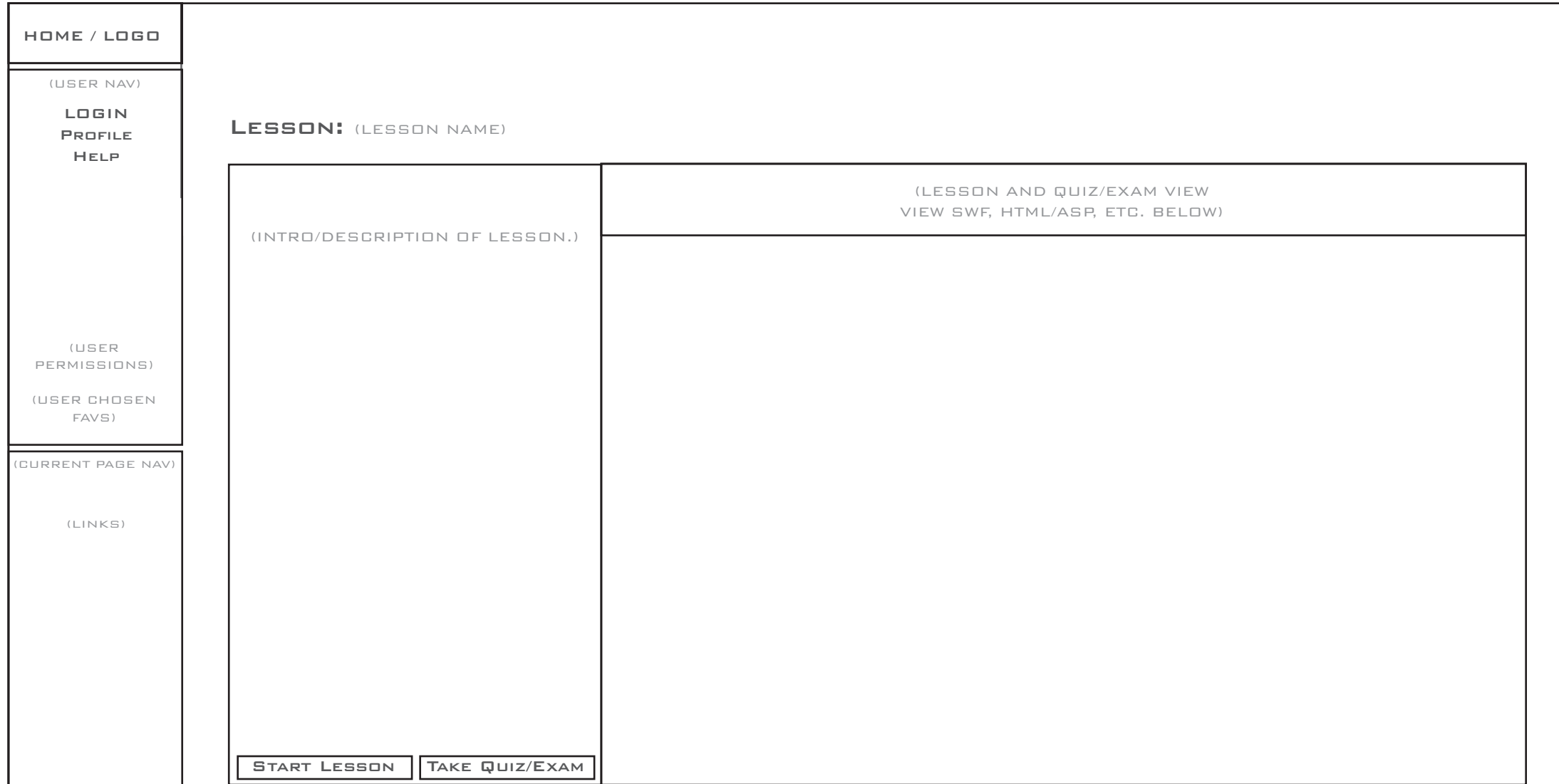
- THESE ARE THE "CREATE LESSON" AND "EDIT LESSON" PAGES FOR THE OPEXSERVICE.NET SITE.
- "CREATE LESSON" CAPABILITIES WILL INCLUDE: CREATE A NEW LESSON LISTING IN SITE (THIS PAGE WILL USE DATABASE INVOLVEMENT FOR THAT), NAMING THE LESSON, UPLOADING CERTAIN FILE TYPES, PREVIEWING THE LESSON, AND THEN SAVING IT. "EDIT LESSON" CAPABILITIES ARE IDENTICAL TO "CREATE LESSON" EXCEPT: INSTEAD OF NAMING THE LESSON THE USER WILL BE RENAMING THE LESSON.
- THIS PAGE INCLUDES A SCROLL BAR ON THE SIDE.



NOTES:

- THIS IS /SELECTLESSON02.ASP FOR THE NEW OPEXSERVICE.NET SITE.

- CAPABILITIES INCLUDE: (TECHS) ABLE TO VIEW LESSON LIST, THEIR RECENT GRADES, AND ANNOUNCEMENTS; (MANAGERS ONLY) ARE ABLE TO VIEW RECENT GRADES OF THEIR TECHS.

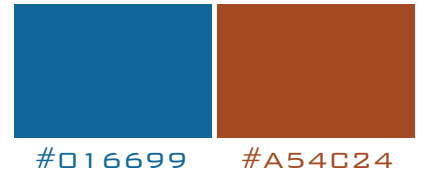


NOTES:

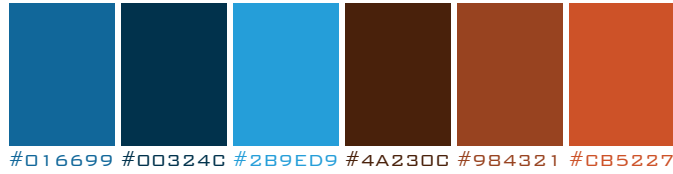
- THIS IS THE TAKE LESSON PAGE FOR THE OPEXSERVICE.NET SITE.
- CAPABILITIES INCLUDE: ABLE TO VIEW LESSON FILES (SWF, HTML/ASP, ETC.) AS WELL AS TAKE THE RELATED QUIZ/EXAM.
- NOTE: THE MAIN NAV. IS NOT ACCESSIBLE FROM THIS PAGE, ONLY User NAV. AND PAGE NAV. CAN BE ACCESSSED.



(COMPLIMENTARY)



(COMPLIMENTARY 2)



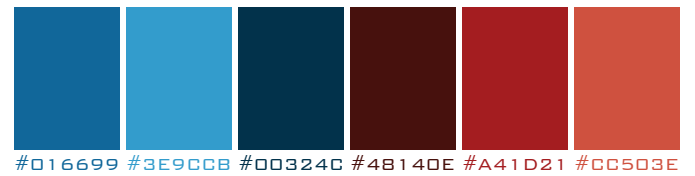
(SPLIT COMPLIMENTARY)



(RIGHT COMPLIMENTARY)



(LEFT COMPLIMENTARY)



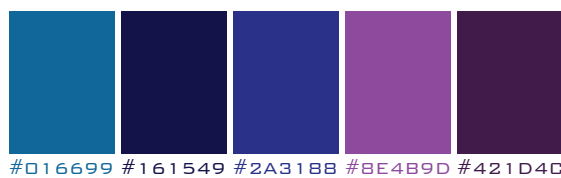
(MONOCHROMATIC 2)



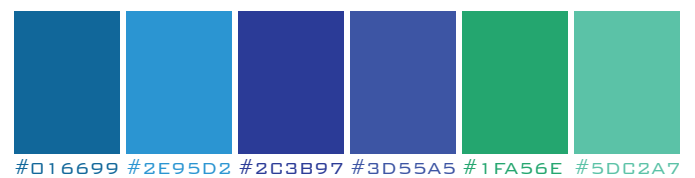
(HIGH CONTRAST 2)



(HIGH CONTRAST 3)

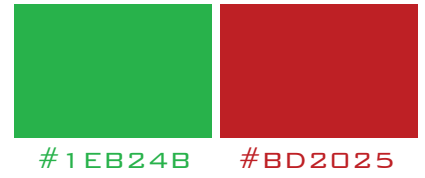


(ANALOGOUS 2)

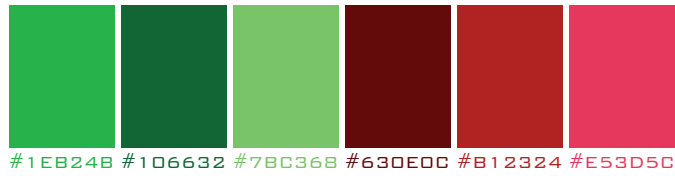




(COMPLIMENTARY)



(COMPLIMENTARY 2)



(SPLIT COMPLIMENTARY)



(RIGHT COMPLIMENTARY)



(LEFT COMPLIMENTARY)



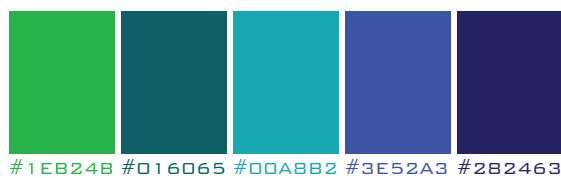
(MONOCHROMATIC 2)



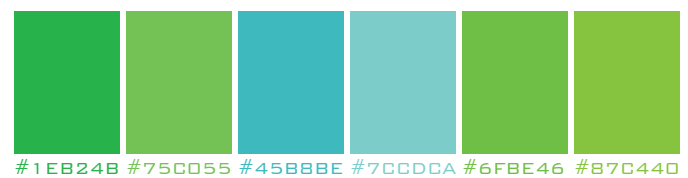
(HIGH CONTRAST 2)



(HIGH CONTRAST 3)



(ANALOGOUS 2)

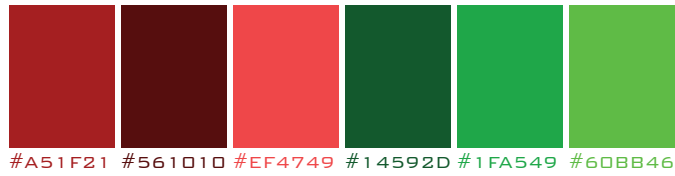




(COMPLIMENTARY)



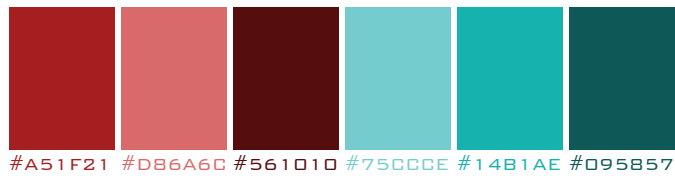
(COMPLIMENTARY 2)



(SPLIT COMPLIMENTARY)



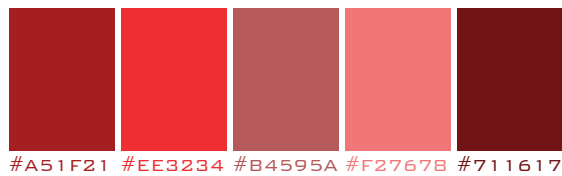
(RIGHT COMPLIMENTARY)



(LEFT COMPLIMENTARY)



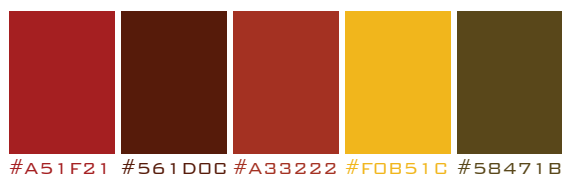
(MONOCHROMATIC 2)



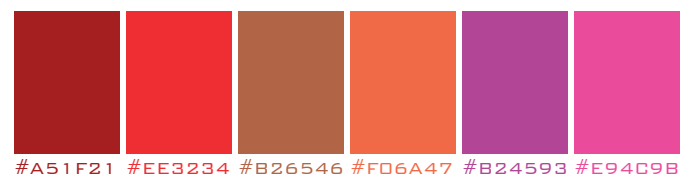
(HIGH CONTRAST 2)



(HIGH CONTRAST 3)



(ANALOGOUS 2)





(COMPLIMENTARY)



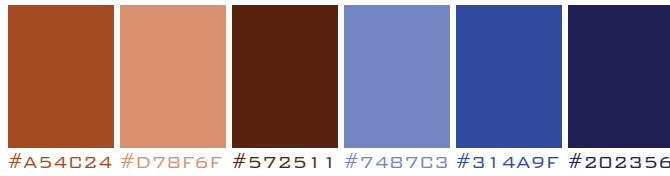
(COMPLIMENTARY 2)



(SPLIT COMPLIMENTARY)



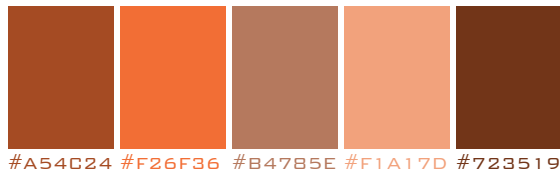
(RIGHT COMPLIMENTARY)



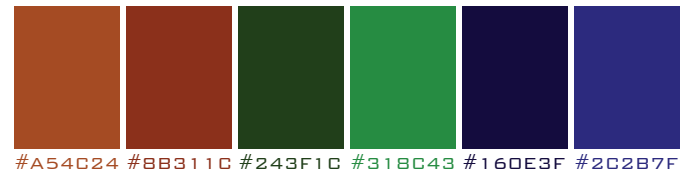
(LEFT COMPLIMENTARY)



(MONOCHROMATIC 2)



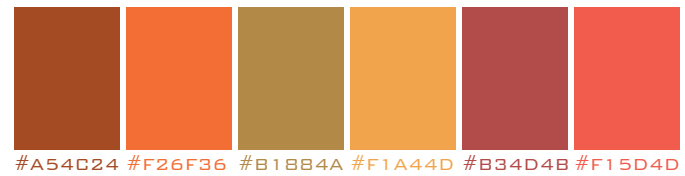
(HIGH CONTRAST 2)

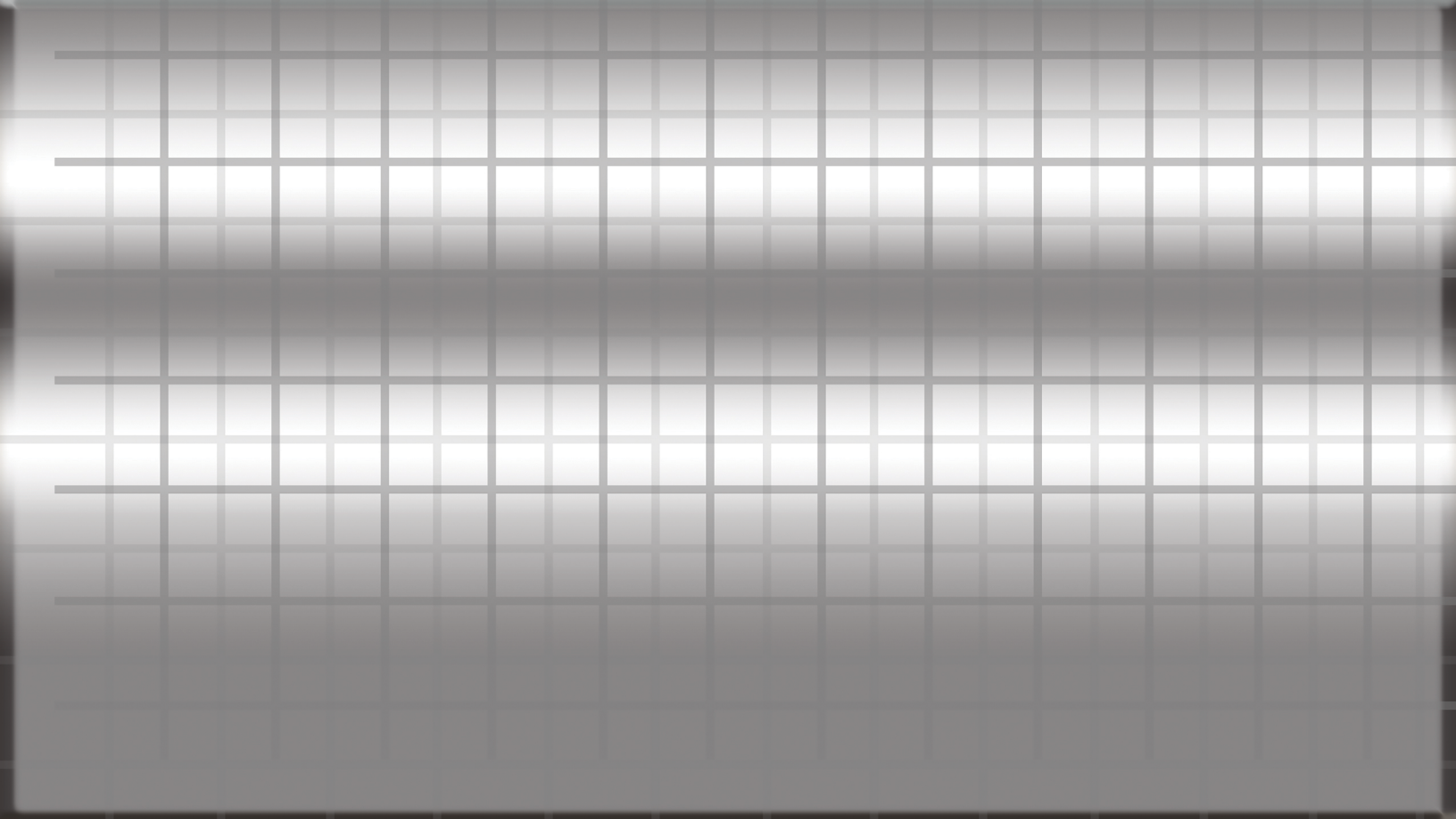


(HIGH CONTRAST 3)



(ANALOGOUS 2)



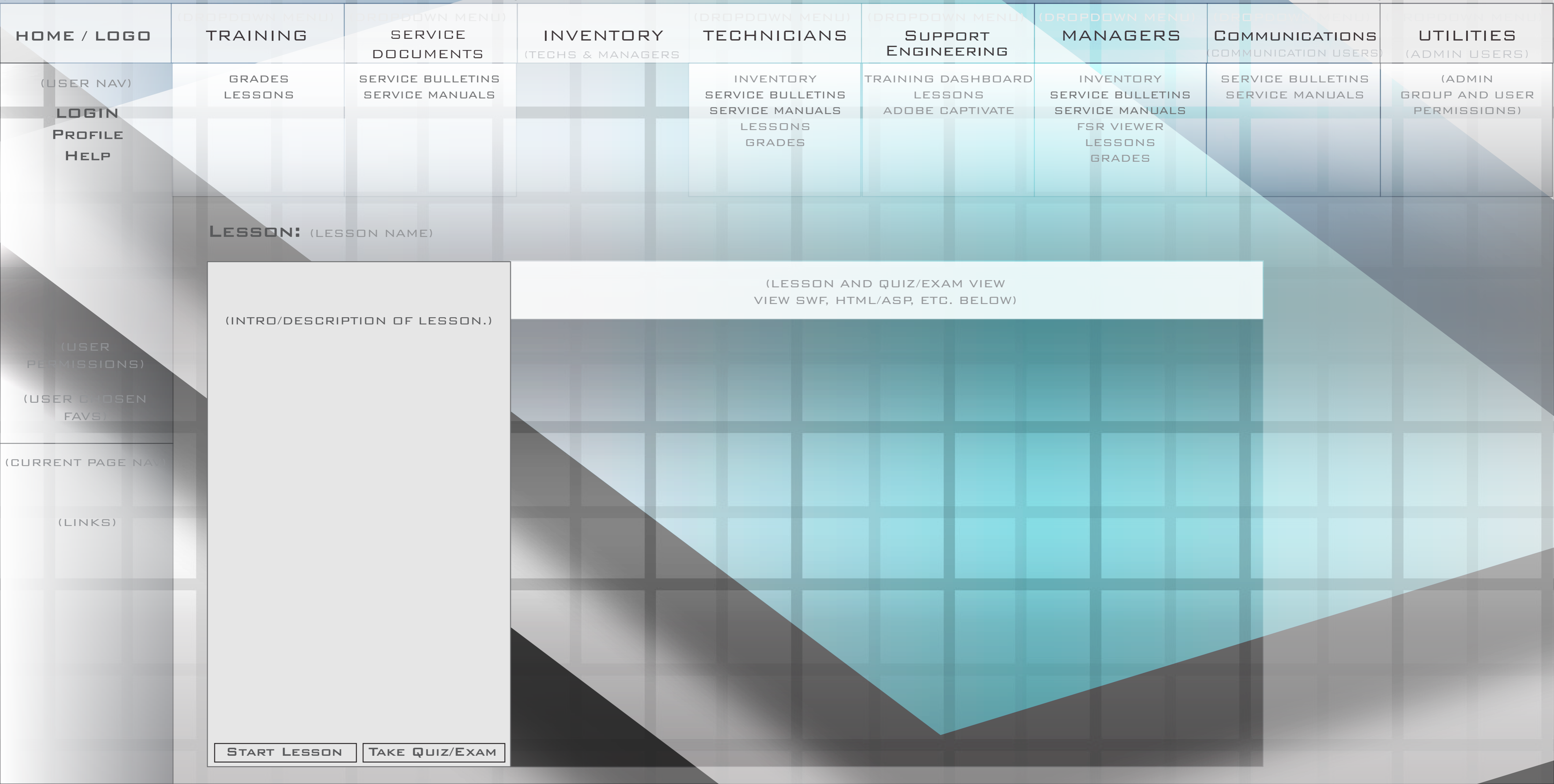




(MENUS VISIBLE TO ALL USERS AND GROUPS EXCEPT GUESTS / OUTSIDE USERS)

(GROUP PERMISSIONS/PRIVILEGES - MENUS HIDDEN FROM OTHER USERS AND GROUPS)

| | | | | | | | | |
|---|------------------------------------|--|--|---|---|--|---|--|
| HOME / LOGO | (DROPDOWN MENU) TRAINING | (DROPDOWN MENU) SERVICE DOCUMENTS | INVENTORY (TECHS & MANAGERS) | (DROPDOWN MENU) TECHNICIANS | (DROPDOWN MENU) SUPPORT ENGINEERING | (DROPDOWN MENU) MANAGERS | (DROPDOWN MENU) COMMUNICATIONS (COMMUNICATION USERS) | (DROPDOWN MENU) UTILITIES (ADMIN USERS) |
| (USER NAV) LOGIN PROFILE HELP | GRADES LESSONS | SERVICE BULLETINS SERVICE MANUALS | | INVENTORY SERVICE BULLETINS SERVICE MANUALS LESSONS GRADES | TRAINING DASHBOARD LESSONS ADOBE CAPTIVATE | INVENTORY SERVICE BULLETINS SERVICE MANUALS FSR VIEWER LESSONS GRADES | SERVICE BULLETINS SERVICE MANUALS | (ADMIN GROUP AND USER PERMISSIONS) |
| (USER PERMISSIONS) (USER CHOSEN FAVS) | (CURRENT PAGE CONTENT) | | | | | | | |
| (CURRENT PAGE NAV) (LINKS) | | | | | | | | |



LESSON: (LESSON NAME)

(LESSON AND QUIZ/EXAM VIEW VIEW SWF, HTML/ASP, ETC. BELOW)

(INTRO/DESCRIPTION OF LESSON.)

VERT MENU: Monitor: (@1260)

HORIZ MENU: Monitor 1260x1440 216dpi: (@1440)

VERT MENU: Tablet: (@1920)

HORIZ MENU: Tablet 1920x1200 273dpi: (@1200)

VERT MENU: Phone 1920x1080 441dpi: (@1920)

HORIZ MENU: Phone 1920x1080 441dpi: (@1080)

(MENUS VISIBLE TO ALL USERS AND GROUPS EXCEPT GUESTS / OUTSIDE USERS)

(GROUP PERMISSIONS/PRIVILEGES - MENUS HIDDEN FROM OTHER USERS AND GROUPS)

Vert nav bar:
No change on
any screen.

Nav bar collapse: dropdown menu

Nav bar wraps: buttons in 2 rows

Nav bar: buttons in 1 row

(CURRENT PAGE CONTENT)